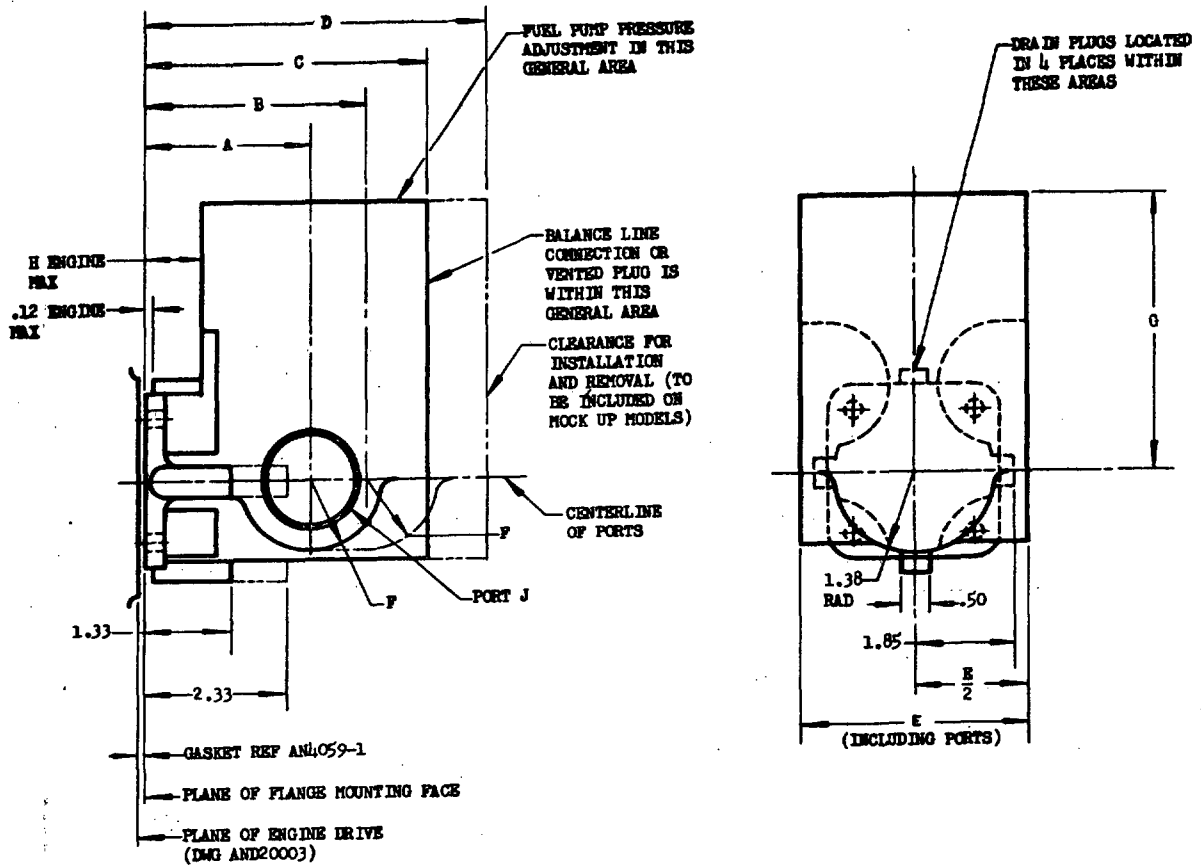


NO part of this drawing, or other data, shall be used for any purpose other than in connection with a contract awarded by the United States Government. This drawing is the property of the United States Government and is loaned to you; it and its contents are not to be distributed, reproduced, or otherwise used in any manner without the express written permission of the United States Government. If you are a contractor, you shall not disclose the contents of this drawing to any other person or organization, or conveying any rights or privileges in connection therewith, in any way without the express written permission of the United States Government.

NOTE: This drawing was approved by joint action of the Air Force and Navy Departments on the Air Force-Navy standard drawing ANDIO320. This drawing is the property of the United States Government and is loaned to you; it and its contents are not to be distributed, reproduced, or otherwise used in any manner without the express written permission of the United States Government. If you are a contractor, you shall not disclose the contents of this drawing to any other person or organization, or conveying any rights or privileges in connection therewith, in any way without the express written permission of the United States Government.



REFERENCE TABLE

CLEARANCE TYPE NO.	ENGINE DISPLACEMENT (CU IN.)	FUEL PUMP AN PART NO.	CAPACITY GPH	A	B	C	D	E	F RAD	G	H	THREAD J
TYPE I	1000 AND UNDER	AN4100-1	200	2.00	3.00	3.50	4.50	2.93	.92	3.63	.74	.75 ANPT
TYPE II	1001 - 2400	AN4101-1	400	2.19	3.19	3.75	4.75	3.30	.92	4.13	.74	.75 ANPT
TYPE III	2401 - 4000	AN4102-1	700	2.31	3.31	4.12	5.12	3.75	1.17	4.54	.74	1.00 ANPT
TYPE IV	4001 AND ABOVE	-	1200	2.88	3.88	5.00	6.00	4.05	2.39	4.76	.99	1.625-12 N-3

CLEARANCE SHALL BE PROVIDED TO PERMIT INSTALLATION OF THE PUMP IN AT LEAST ONE OF FOUR POSSIBLE POSITIONS AS CONTROLLED BY THE FLANGE HOLES.
 PROVIDE ACCESSORY CLEARANCE AROUND ACCESSORY MOUNTING FLANGE IN ACCORDANCE WITH DRAWING AND10263.
 ALLOW CLEARANCE AT LOWEST MOUNTING FLANGE DRAIN, PORTS J AND BALANCE LINE CONNECTION FOR NOMINAL AN FITTINGS AND ATTACHING LINES.
 CLEARANCE SHALL BE PROVIDED FOR ADJUSTING FUEL PUMP PRESSURE.
 DIMENSIONS IN INCHES. UNLESS OTHERWISE SPECIFIED, DIMENSIONS ARE MINIMUM CLEARANCE ON ENGINE.

④ INACTIVE FOR DESIGN AFTER 4 MAR 1953. NO SUPERSEDING AN STANDARD.

④ FOR DEFINITION AND APPLICATION OF DRAWING STATUS NOTES, SEE ANA BULLETIN NO. 337.

AIR FORCE-NAVY AERONAUTICAL DESIGN STANDARD

INSTALLATION CLEARANCE - TYPE XIII DRIVE

ANDIO320

NOT A PART NUMBER

APPROVED 16 Feb 42 REVISED ① 11 Aug 45 ② 18 Aug 47 ③ 12 Aug 49 ④ 4 Mar 53