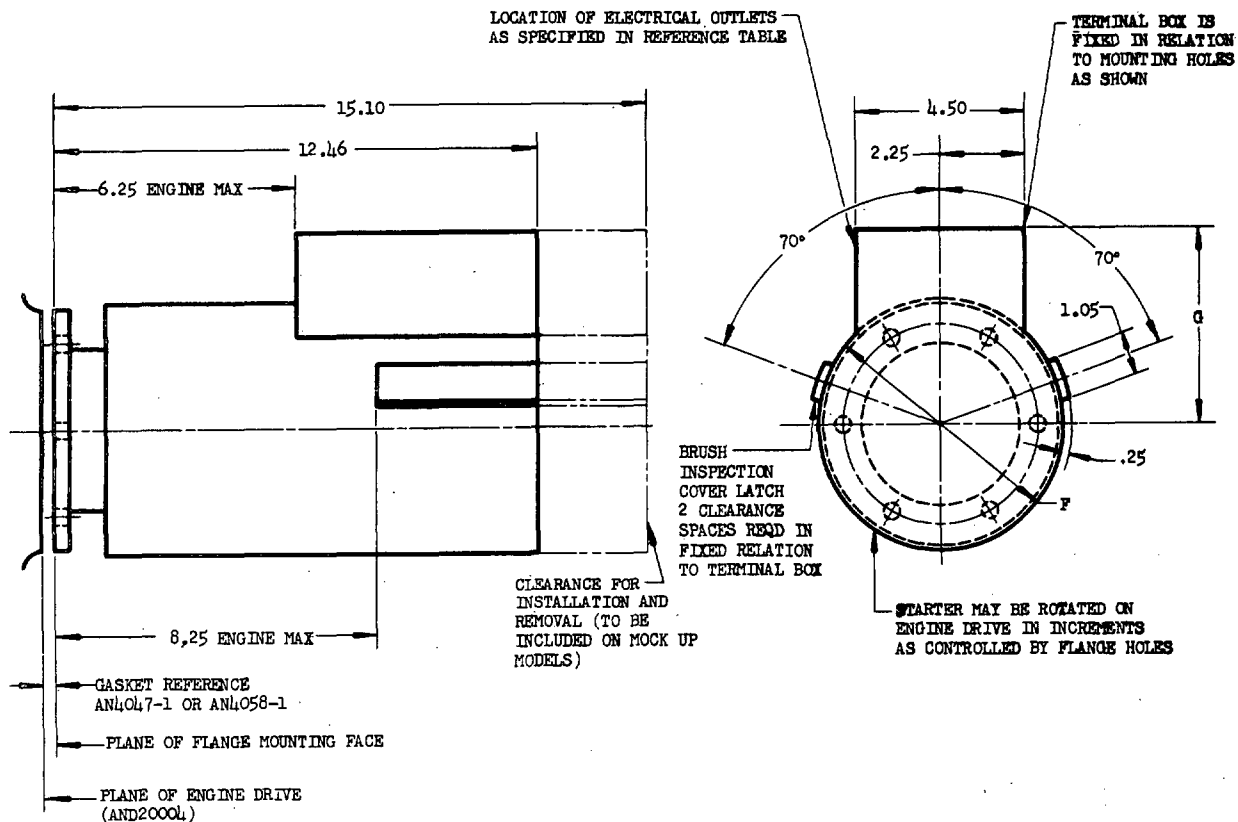


NOTICE: When Government drawings, specifications, or other data are used for any purpose other than in connection with a contract with the Government, the United States Government thereby incurs no responsibility, nor any obligation whatsoever, and the fact that the Government may have furnished, furnished, or in any way supplied the said drawings, specifications, or other data is not to be regarded by implication or otherwise as in any manner licensing the holder or any other person or corporation, or conveying any rights or permission to manufacture, use, or sell any patented invention that may in any way be related thereto.

NOTE: This drawing was approved by joint action of the Air Force and Navy Departments on the Air Force-Navy standard for this product. It is drawing number of independent standard drawings for the same product and shall become effective for the procurement of aeronautical supplies, or for use in new design, not later than 6 months after the latest date of approval shown.



AN PART NO.	CLASS	LOCATION OF ELECTRICAL OUTLET	DRIVE TYPE AND20004	F DIA	Q
AN4116R3	B	SIDE AND END	XIV-A	6.10	5.05
AN4116R5	D	SIDE AND END	XIV-B	6.10	5.05
AN4116R7	C	SIDE AND END	XIV-C	7.10	5.55

FOR CLASS B, C AND D STARTERS. SEE SPECIFICATION AN-8-54 FOR DEFINITION OF STARTER CLASSES.

PROVIDE ACCESSORY CLEARANCE AROUND ACCESSORY MOUNTING FLANGE IN ACCORDANCE WITH DRAWING AND10264.

CLEARANCE SHALL BE PROVIDED TO PERMIT INSTALLATION OF STARTER IN AT LEAST ONE OF POSSIBLE POSITIONS AS CONTROLLED BY THE NUMBER OF MOUNTING HOLES. CLEARANCE SHALL BE PROVIDED FOR CONNECTIONS TO ELECTRIC OUTLETS.

DIMENSIONS IN INCHES. UNLESS OTHERWISE SPECIFIED, DIMENSIONS ARE MINIMUM CLEARANCE ON ENGINE.

SHEET 2 ADDED.

⑤ INACTIVE FOR DESIGN AFTER 4 MAR 1953. NO SUPERSEDING AN STANDARD.

⑤ FOR DEFINITION AND APPLICATION OF DRAWING STATUS NOTES, SEE ANA BULLETIN NO. 337.

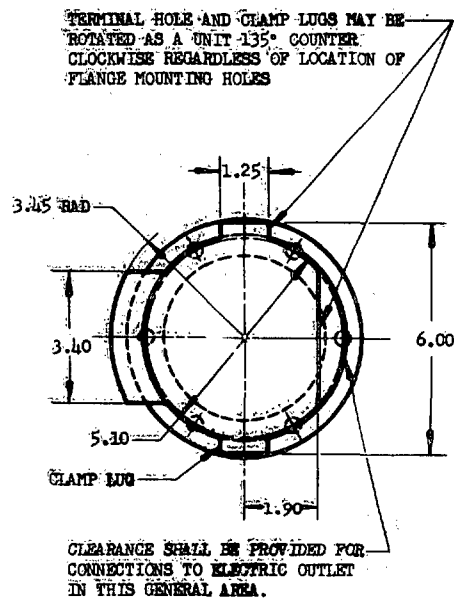
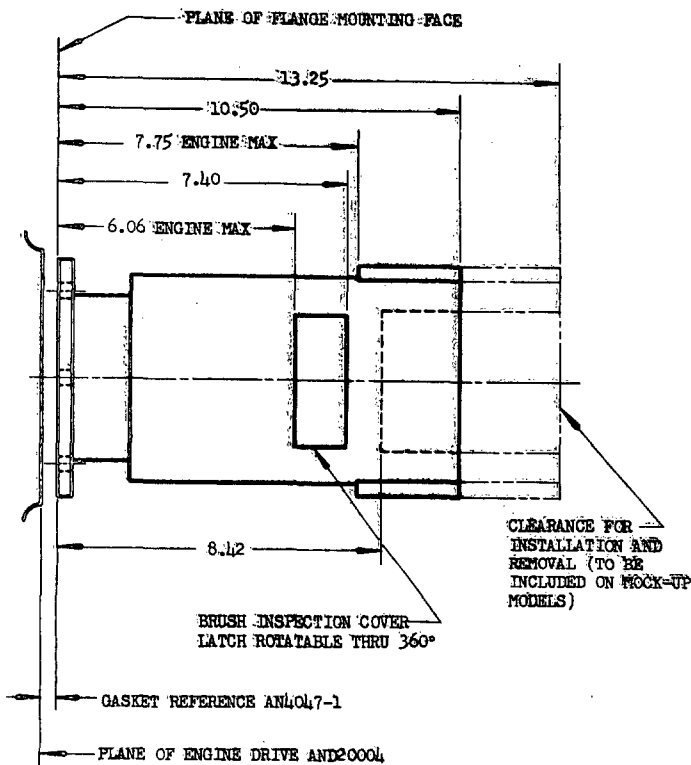
AIR FORCE-NAVY AERONAUTICAL DESIGN STANDARD

INSTALLATION CLEARANCE - TYPE XIV DRIVE

AND10303

SHEET 1 OF 2 SHEETS

APPROVED 2 Sep 41 REVISED 1 29 Jun 45 2 5 Dec 48 3 24 Feb 49 4 16 Jul 49 5 11 Mar 53



AN PART NO.	CLASS	DRIVE TYPE AND20004
AN116R1	A	XIV-A

FOR CLASS A STARTERS. SEE SPECIFICATION AN-9-54 FOR DEFINITION OF STARTER CLASSES.

PROVIDE ACCESSORY CLEARANCE AROUND ACCESSORY MOUNTING FLANGE IN ACCORDANCE WITH DRAWING AND10264.

CLEARANCE SHALL BE PROVIDED TO PERMIT INSTALLATION OF STARTER IN AT LEAST ONE OF POSSIBLE POSITIONS AS CONTROLLED BY THE NUMBER OF MOUNTING HOLES.

DIMENSIONS IN INCHES. UNLESS OTHERWISE SPECIFIED, DIMENSIONS ARE MINIMUM CLEARANCE ON ENGINE.

① INACTIVE FOR DESIGN AFTER 4 MAR 1953. NO SUPERSEDING AN STANDARD.

① FOR DEFINITION AND APPLICATION OF DRAWING STATUS NOTES, SEE ANA BULLETIN NO. 337.

APPROVED 15 JUL 49 REVISED ① 4 MAR 53

AIR FORCE-NAVY AERONAUTICAL DESIGN STANDARD

INSTALLATION CLEARANCE - TYPE XIV DRIVE

AND10303

SHEET 2 OF 2 SHEETS

NOT A PART NUMBER

NOTE: When Government drawings, specifications, or other data are used for any purpose other than in connection with a definitely related Government procurement operation, the United States Government thereby incurs no responsibility, nor any obligation whatsoever; and the fact that the Government may have formulated, furnished, or in any way supplied the said drawings, specifications, or other data is not to be regarded by implication or otherwise as in any manner endorsing the holder or any other person or corporation, or conveying any rights or permission to manufacture, use, or sell any patented invention that may in any way be related thereto.

NOTE: This drawing was approved by joint action of the Air Force and Navy Departments as the Air Force-Navy standard for this product. This drawing superseded all antecedent standard drawings for the same product and shall become effective for the procurement of aeronautical equipment, or for use in new design, not later than 6 months after the latest date of approval shown.