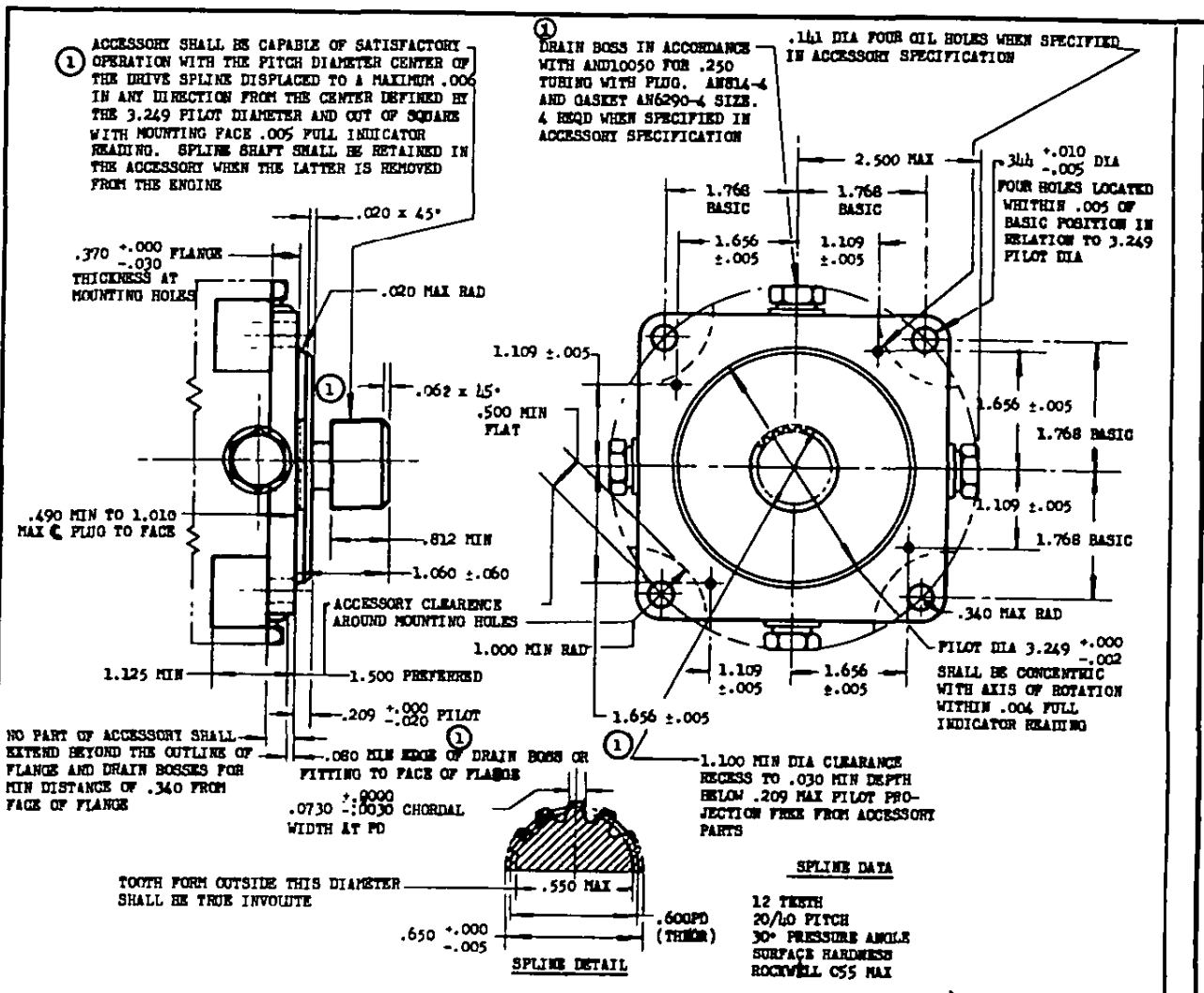


NOTE: This drawing was approved by the Air Force and Navy Departments as the Air Force-Navy standard for this product. This drawing supersedes all associated standard drawings for the same product and shall become effective for the procurement of aeronautical supplies, or for use in new design, and later than 9 months after the latest date of approval above.



TYPE	Ts TORQUE LB-IN.	NOMINAL USE
XI-B	1500	LOW SPEED FLUID POWER PUMP PROPELLER CONTROL
XI-C	2000	LOW SPEED FLUID POWER PUMP

- ① ROTATION: CLOCKWISE AS VIEWED FROM OPPOSITE THE DRIVE END
- FLANGE OUTLINE AS DIMENSIONED IS A BASIC MAXIMUM AREA REQUIREMENT.
- THE ACCESSORY SHALL OPERATE SATISFACTORILY WITH OIL LEAKAGE FROM THE ENGINE INTO THE PILOT COMPARTMENT NOT EXCEEDING 2 CC PER HOUR. ACCESSORY CONTAINING DRIVE SHAFT SEALS TO PREVENT LEAKAGE OF FLUID FROM THE ACCESSORY SHALL BE PROVIDED WITH DRAIN BOSS AS SHOWN CONNECTED TO THE PILOT COMPARTMENT BETWEEN THE ENGINE SEAL AND THE ACCESSORY SEAL.
- ② WHEN THE ACCESSORY IS OPERATING AT A SPEED OF 1300 TO 4125 RPM THE ENGINE WILL FLOW A MINIMUM OF .25 GPH OF OIL TO ONE OIL HOLE AT A MINIMUM PRESSURE OF 5 PSI AND NOT EXCEEDING 70 PSI IF FLOW IS REDUCED BELOW .25 GPH TO .05 GPH.
- SPEED: NORMAL RATED SPEED SHALL BE 3750 RPM.
- ③ STRENGTH: THE ACCESSORY SHALL PROVIDE A SHEAR SECTION THAT SHALL FAIL AT A TORQUE BELOW (Ts).
- REMOVE ALL BURRS AND SHARP EDGES.
- FOR DETAIL OF TYPE XI ENGINE DRIVE SEE AND20001.
- ④ DIMENSIONS IN INCHES. UNLESS OTHERWISE SPECIFIED, TOLERANCES: DECIMALS ±.010, ANGLES ±2°.
- ⑤ THIS DRAWING AND THE APPLICABLE ACCESSORY SPECIFICATIONS, TOGETHER, COMPLETELY DEFINE THE DESIGN REQUIREMENTS.

AIR FORCE-NAVY AERONAUTICAL DESIGN STANDARD  
 FLANGE - TYPE XI ACCESSORY MOUNTING

AND10261

NOT A PART NUMBER

APPROVED 1 Aug 49 REVISED 1 Jun 53