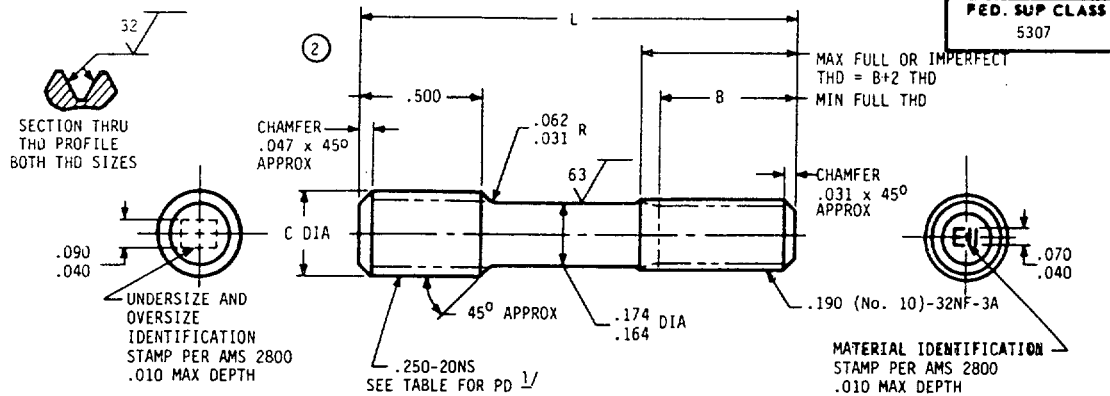


User activity:

Review activity:
DLA - IS
NS

NOTE: This drawing was approved by joint action of the Air Force and Navy Departments as the Air Force-Navy standard for this product. This drawing supersedes all antecedent standard drawings for the same product and shall become effective for the procurement of aeronautical supplies, or for use in new design, not later than 6 months after the latest date of approval shown.



UNDERSIZE AND OVERSIZE IDENTIFICATION		-.003	STANDARD	+.003	+.006	+.009	+.012
		(-3)		(3)	(6)	(9)	(12)
C		.245-.250	.245-.250	.245-.250	.245-.250	.245-.259	.245-.259
PD BEFORE PLATING		.2183-.2193	.2183-.2223	.2243-.2253	.2273-.2283	.2303-.2313	.2333-.2343
PD AFTER PLATING		.2188-.2203	.2218-.2233	.2248-.2263	.2278-.2293	.2308-.2323	.2338-.2353
PD LEAD THREAD		.2125-.2145	.2155-.2175	.2185-.2205	.2215-.2235	.2245-.2265	.2275-.2295
L	B	PART NUMBER	PART NUMBER	PART NUMBER	PART NUMBER	PART NUMBER	PART NUMBER
1.000	.375	AN154719	AN154720	AN154721	AN154722	AN154723	AN154724
1.062	.438	AN154725	AN154726	AN154727	AN154728	AN154729	AN154730
1.125	.500	AN154731	AN154732	AN154733	AN154734	AN154735	AN154736
1.188	.500	AN154737	AN154738	AN154739	AN154740	AN154741	AN154742
1.250	.500	AN154743	AN154744	AN154745	AN154746	AN154747	AN154748
1.312	.500	AN154749	AN154750	AN154751	AN154752	AN154753	AN154754
1.375	.500						
1.375	.500	AN154755	AN154756	AN154757	AN154758	AN154759	AN154760
1.438	.500	AN154761	AN154762	AN154763	AN154764	AN154765	AN154766
1.500	.500	AN154767	AN154768	AN154769	AN154770	AN154771	AN154772
1.562	.500	AN154773	AN154774	AN154775	AN154776	AN154777	AN154778
1.625	.500	AN154779	AN154780	AN154781	AN154782	AN154783	AN154784
1.688	.500	AN154785	AN154786	AN154787	AN154788	AN154789	AN154790
1.750	.500	AN154791	AN154792	AN154793	AN154794	AN154795	AN154796
1.812	.500	AN154797	AN154798	AN154799	AN154800	AN154801	AN154802

1/ PITCH DIAMETERS OF BOTH THREADED ENDS SHALL BE CONCENTRIC WITHIN .006 FIR.

NOTES:

1. MATERIAL: STEEL AMS 6322. (AMS 6320 MATERIAL MAY ALSO BE USED FOR THIS PART UNTIL JANUARY 1, 1957).
2. HARDNESS: ROCKWELL C26-32.
3. FINISH: CADMIUM PLATE AMS 2400. DIMENSIONS ARE AFTER PLATING EXCEPT WHERE SHOWN.
4. SURFACE ROUGHNESS: AS 107.
5. MANUFACTURING SPECIFICATION: AMS 7456. PARTS SUBJECT TO MAGNETIC INSPECTION PER AMS 2640.
6. BREAK SHARP EDGES .003-.015 UNLESS OTHERWISE SPECIFIED.
7. DIMENSIONS IN INCHES. UNLESS OTHERWISE SPECIFIED.
8. TOLERANCES: LINEAR DIMENSIONS +.010.

DO NOT USE UNASSIGNED PART NUMBERS.

(2) REVISED AND REDRAWN

THIS STANDARD WAS DEVELOPED COOPERATIVELY WITH THE ENGINE AND PROPELLER UTILITY PARTS COMMITTEE OF THE SAE.

P.A.	11	AERONAUTICAL STANDARD	AN154701 THRU AN155000
Other Cust	AV AS		
PROCUREMENT SPECIFICATION NONE		STUD, STEPPED, 2 DIA ENGAGEMENT, .250-20 x .190-32	SHEET 1 OF 1