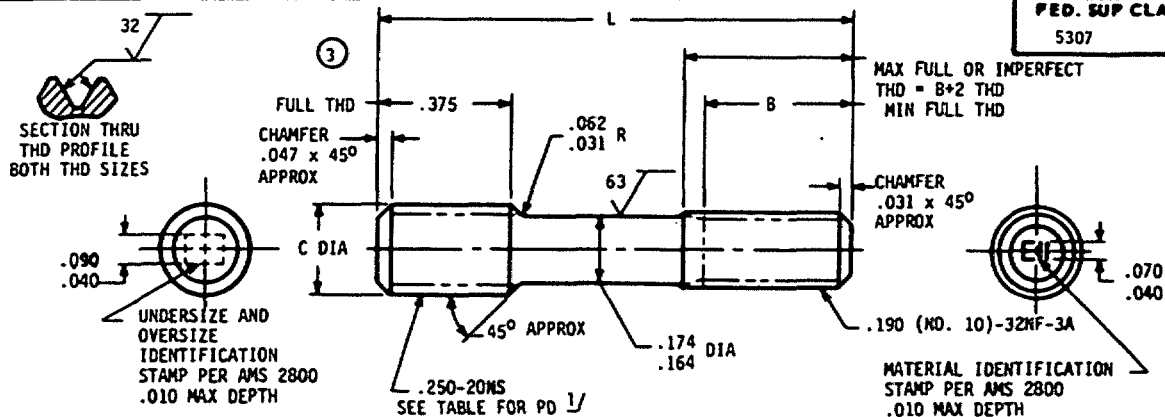


User activity:

Review activity:  
DLA - IS  
NS

NOTE: This drawing was approved by joint action of the Air Force and Navy Departments as the Air Force-Navy standard for this product. This drawing supersedes all antecedent standard drawings for the same product and shall become effective for the procurement of aeronautical supplies, or for use in new design, not later than 6 months after the latest date of approval shown.



UNDERSIZE AND OVERSIZE IDENTIFICATION		-.003		STANDARD		+.003		+.006		+.009		+.012	
		-3		0		3		6		9		12	
C 1/ PD BEFORE PLATING PD AFTER PLATING PD LEAD THREAD		.245-.250 .2183-.2193 .2188-.2203 .2125-.2145		.245-.250 .2213-.2223 .2218-.2233 .2155-.2175		.245-.250 .2243-.2250 .2248-.2263 .2185-.2175		.245-.250 .2273-.2283 .2278-.2293 .2215-.2235		.254-.259 .2303-.2313 .2308-.2323 .2245-.2265		.254-.259 .2333-.2343 .2338-.2353 .2275-.2295	
L	B	PART NUMBER		PART NUMBER		PART NUMBER		PART NUMBER		PART NUMBER		PART NUMBER	
.875 .938 1.000	.375 .438 .500	AN150519 AN150525 AN150531		AN150520 AN150526 AN150532		AN150521 AN150527 AN150533		AN150522 AN150528 AN150534		AN150523 AN150529 AN150536		AN150524 AN150530 AN150536	
1.062 1.125 1.188	.500 .500 .500	AN150537 AN150543 AN150549		AN150538 AN150544 AN150550		AN150539 AN150545 AN150551		AN150540 AN150546 AN150552		AN150541 AN150547 AN150553		AN150542 AN150548 AN150554	
1.250 1.312 1.375	.500 .500 .500	AN150555 AN150561 AN150567		AN150556 AN150562 AN150568		AN150557 AN150563 AN150569		AN150558 AN150564 AN150570		AN150559 AN150565 AN150571		AN150560 AN150566 AN150572	
1.438 1.500 1.562	.500 .500 .500	AN150573 AN150579 AN150585		AN150574 AN150580 AN150586		AN150575 AN150581 AN150587		AN150576 AN150582 AN150588		AN150577 AN150583 AN150589		AN150578 AN150584 AN150590	
1.625 1.688	.500 .500	AN150591 AN150597		AN150592 AN150598		AN150593 AN150599		AN150594 AN150600		AN150595 AN150601		AN150596 AN150602	

1/ PITCH DIAMETERS OF BOTH THREADED ENDS SHALL BE CONCENTRIC WITHIN .006 FIR.

## NOTES:

1. MATERIAL: STEEL AMS 6322 (AMS 6320 MATERIAL MAY ALSO BE USED FOR THIS PART UNTIL JANUARY 1, 1957).
2. HARDNESS: ROCKWELL C26-32.
3. FINISH: CADMIUM PLATE AMS 2400. DIMENSIONS ARE AFTER PLATING EXCEPT WHERE SHOWN.
4. SURFACE ROUGHNESS: AS 107.
5. MANUFACTURING SPECIFICATION: AMS 7456. PARTS SUBJECT TO MAGNETIC INSPECTION PER AMS 2640.
6. BREAK SHARP EDGES .003-.015 UNLESS OTHERWISE SPECIFIED.
7. DIMENSIONS IN INCHES. UNLESS OTHERWISE SPECIFIED:
8. TOLERANCES: LINEAR DIMENSIONS +.010.  
DO NOT USE UNASSIGNED PART NUMBERS.

3 REVISED AND REDRAWN

THIS STANDARD WAS DEVELOPED COOPERATIVELY WITH THE ENGINE AND PROPELLER UTILITY PARTS COMMITTEE OF THE SAE.

P.A.	11	AERONAUTICAL STANDARD	AN150501 THRU AN150800
Other Cont.	AV AS		
PROCUREMENT SPECIFICATION		STUD.-STEPPED, 1.5 DIA ENGAGEMENT, .250-20 x .190-32	SHEET 1 OF 1
NONE			