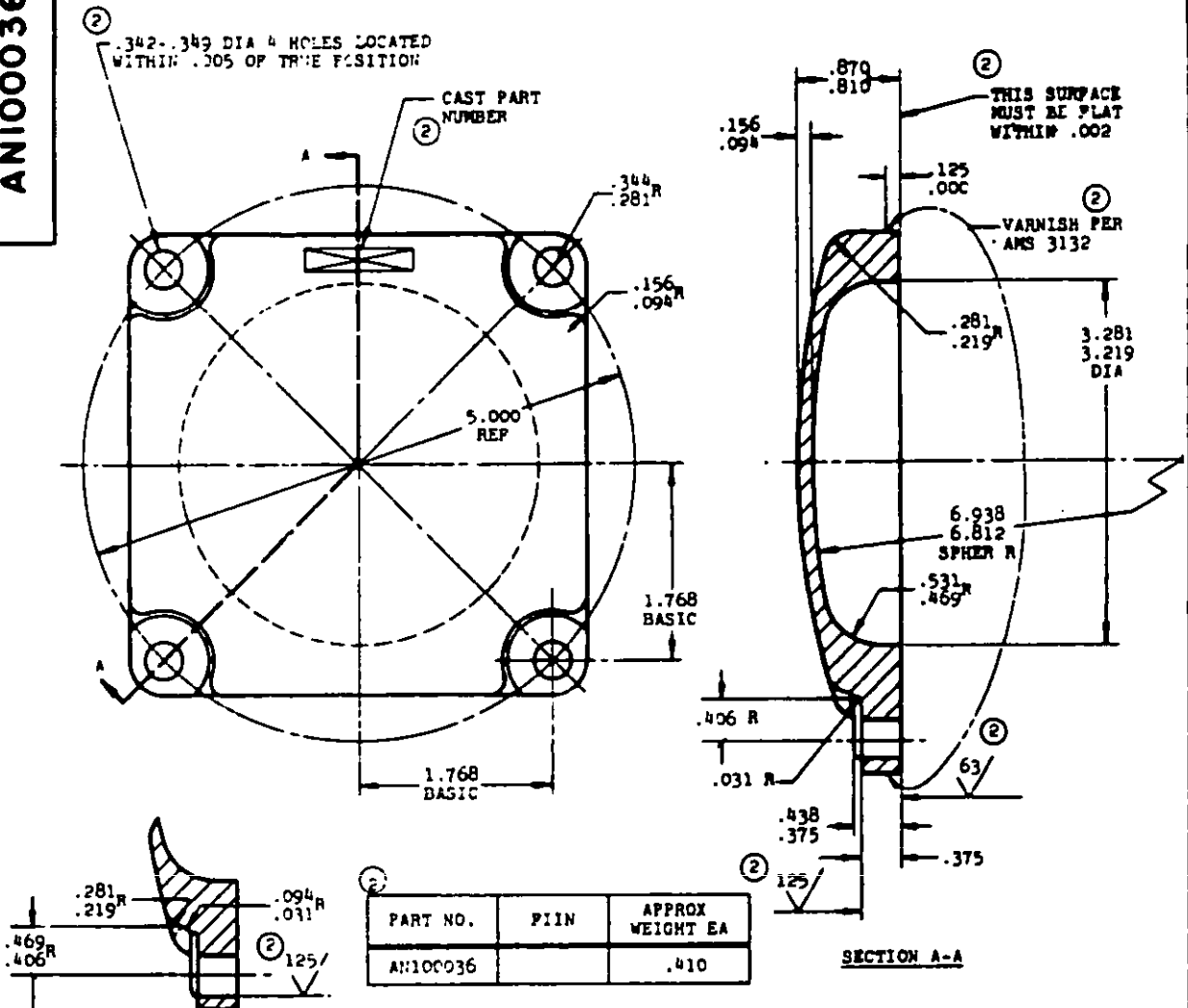


NOTE: When Government drawings, specifications, or other data are used for any purpose other than in connection with a particular procurement, the United States Government assumes no responsibility, and any obligation (whether or not) is hereby disclaimed. The use of the Government name, logo, or other identifying mark shall not be used to endorse or recommend any product or service, or to imply approval or disapproval by the Government. The use of the Government name, logo, or other identifying mark shall not be used to imply approval or disapproval by the Government.

NOTES: Drawing was prepared by joint action of the Air Force and Navy. This drawing represents the standard for the part and shall be used for the procurement of replacement parts, or for use in new design, and later than 6 months after the latest date of approval shown.

AN100036



MATERIAL: MAGNESIUM AMS 4424 OR AMS 4484

② PARTING LINES OF CASTINGS ARE TO BE COMMERCIALY CLEAN.

② SURFACE ROUGHNESS: AS 291 UNSPECIFIED SURFACES AS CAST.

MACHINED PARTS SUBJECT TO FLUORESCENT PENETRANT INSPECTION PER AMS 2645

② FINISH: AMS 2510 UNLESS OTHERWISE SPECIFIED.

CASTING IDENTIFICATION: AMS 2804

BREAK SHARP EDGES .003-.015 UNLESS OTHERWISE SPECIFIED.

DIMENSIONS IN INCHES. UNLESS OTHERWISE SPECIFIED: TOLERANCES; LINEAR DIMENSIONS $\pm .010$.

COVERS SUITABLE FOR FLIGHT, SHIPMENT AND STORAGE.

THIS STANDARD WAS DEVELOPED COOPERATIVELY WITH THE ENGINE AND PROPELLER UTILITY PARTS COMMITTEE OF THE SAE.

PROCUREMENT
SPECIFICATION

AIR FORCE-NAVY AERONAUTICAL STANDARD

COVER-TYPE XI ENGINE ACCESSORY DRIVE

AN100036