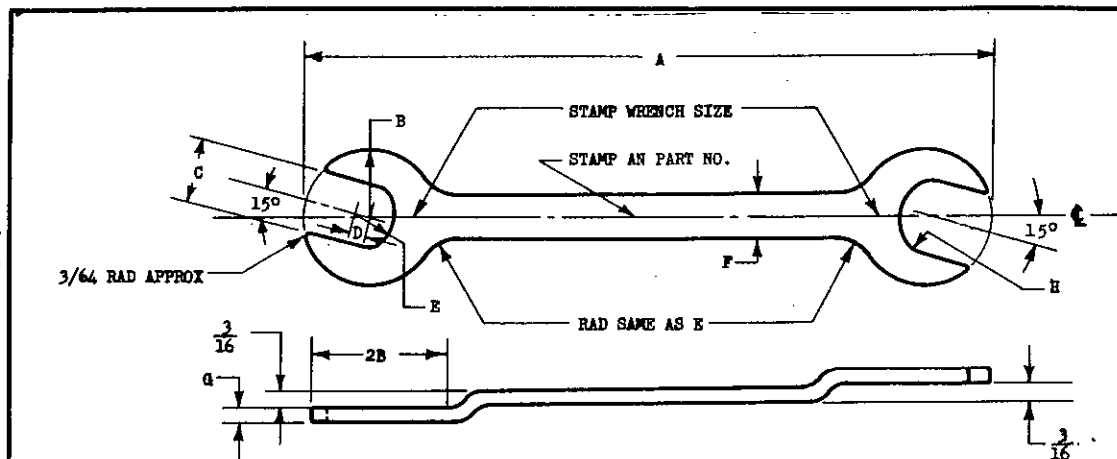


NOTICE: When Government drawings, specifications, or other data are used for any purpose other than in connection with a definitely related Government procurement operation, the United States Government hereby incurs no responsibility, nor any obligation whatsoever; and the fact that the Government may have furnished, approved, or in any way supplied the said drawings, specifications, or other data is not to be regarded by implication or otherwise as in any manner licensing the holder or any other person or corporation, or conveying any rights or permission to manufacture, use, or sell any patented invention that may in any way be related thereto.

NOTE: This drawing was approved by joint action of the War and Navy Departments in the Army-Navy standard and for the product. This drawing supersedes all antecedent standard drawings for the same product.



AN PART NO.	SIZE	A	B RAD MAX	C		D		E RAD		F MAX	G	H RAD	TORQUE LOAD LB-IN. MIN		WEIGHT MAX OUNCES
				SMALL END	LARGE END	SMALL END	LARGE END	SMALL END	LARGE END				SMALL END	LARGE END	
AN8505-1	11/32 AND 3/8	5	13/32	.347 ^{+.006} _{-.000}	.378 ^{+.006} _{-.000}	3/32	3/32	13/64	7/32	3/8	1/8	1/8	82	72	3/4
AN8505-2	3/8 AND 7/16	5	13/32	.378 ^{+.006} _{-.000}	.440 ^{+.006} _{-.000}	3/32	7/64	7/32	17/64	3/8	1/8	1/8	72	53	3/4
AN8505-3	7/16 AND 1/2	5-1/2	1/2	.440 ^{+.006} _{-.000}	.504 ^{+.006} _{-.000}	7/64	1/8	17/64	5/16	3/8	1/8	1/8	121	94	7/8
AN8505-4	1/2 AND 9/16	5-1/2	1/2	.504 ^{+.006} _{-.000}	.566 ^{+.006} _{-.000}	1/8	1/8	5/16	11/32	3/8	1/8	1/8	94	72	1
AN8505-5	9/16 AND 5/8	6	19/32	.566 ^{+.006} _{-.000}	.629 ^{+.007} _{-.000}	1/8	9/64	11/32	3/8	3/8	1/8	1/8	150	120	1
AN8505-6	5/8 AND 11/16	6	19/32	.629 ^{+.007} _{-.000}	.692 ^{+.007} _{-.000}	9/64	5/32	3/8	13/32	3/8	1/8	1/8	120	125	1
AN8505-7	11/16 AND 3/4	6-1/2	11/16	.692 ^{+.007} _{-.000}	.755 ^{+.008} _{-.000}	5/32	3/16	13/32	7/16	7/16	1/8	1/8	239	198	2
AN8505-8	3/4 AND 13/16	6-1/2	11/16	.755 ^{+.008} _{-.000}	.818 ^{+.008} _{-.000}	3/16	7/32	7/16	1/2	7/16	1/8	1/8	198	158	2
AN8505-9	13/16 AND 7/8	7	49/64	.818 ^{+.008} _{-.000}	.880 ^{+.008} _{-.000}	7/32	7/32	1/2	33/64	7/16	1/8	1/8	262	219	2
AN8505-10	7/8 AND 15/16	7	49/64	.880 ^{+.008} _{-.000}	.944 ^{+.009} _{-.000}	7/32	15/64	33/64	35/64	7/16	1/8	1/8	219	177	2
AN8505-11	15/16 AND 1	7-1/2	27/32	.944 ^{+.009} _{-.000}	1.006 ^{+.009} _{-.000}	15/64	15/64	35/64	37/64	1/2	1/8	1/8	292	239	3
AN8505-12	1 AND 1-1/16	7-1/2	27/32	1.006 ^{+.009} _{-.000}	1.068 ^{+.009} _{-.000}	15/64	15/64	37/64	5/8	1/2	1/8	1/8	239	198	3
AN8505-13	1-1/16 AND 1-1/8	8	15/16	1.068 ^{+.009} _{-.000}	1.132 ^{+.010} _{-.000}	15/64	15/64	5/8	21/32	1/2	3/16	3/16	503	425	4
AN8505-14	1-1/8 AND 1-3/16	8	15/16	1.132 ^{+.010} _{-.000}	1.194 ^{+.010} _{-.000}	15/64	1/4	21/32	11/16	1/2	3/16	3/16	425	356	4
AN8505-15	1-3/16 AND 1-1/4	8-1/2	1-1/32	1.194 ^{+.010} _{-.000}	1.257 ^{+.010} _{-.000}	1/4	1/4	11/16	47/64	5/8	3/16	3/16	581	500	5
AN8505-16	1-1/4 AND 1-5/16	8-1/2	1-1/32	1.257 ^{+.010} _{-.000}	1.320 ^{+.011} _{-.000}	1/4	9/32	47/64	49/64	5/8	3/16	3/16	500	425	5
AN8505-17	1-5/16 AND 1-3/8	9	1-1/8	1.320 ^{+.011} _{-.000}	1.383 ^{+.011} _{-.000}	9/32	9/32	49/64	51/64	5/8	3/16	3/16	669	581	5-1/2
AN8505-18	1-3/8 AND 1-7/16	9	1-1/8	1.383 ^{+.011} _{-.000}	1.446 ^{+.011} _{-.000}	9/32	5/16	51/64	53/64	5/8	3/16	3/16	581	500	6
AN8505-19	1-7/16 AND 1-1/2	9-1/2	1-7/32	1.446 ^{+.011} _{-.000}	1.508 ^{+.012} _{-.000}	5/16	5/16	53/64	7/8	3/4	3/16	3/16	762	666	7
AN8505-20	1-1/2 AND 1-9/16	9-1/2	1-7/32	1.508 ^{+.012} _{-.000}	1.571 ^{+.012} _{-.000}	5/16	5/16	7/8	29/32	3/4	3/16	3/16	666	581	7
AN8505-21	1-9/16 AND 1-5/8	10	1-21/64	1.571 ^{+.012} _{-.000}	1.634 ^{+.012} _{-.000}	5/16	11/32	29/32	15/16	3/4	3/16	3/16	912	806	8
AN8505-22	1-5/8 AND 1-11/16	10	1-21/64	1.634 ^{+.012} _{-.000}	1.696 ^{+.012} _{-.000}	11/32	11/32	15/16	31/32	3/4	3/16	3/16	806	681	8
AN8505-23	1-11/16 AND 1-3/4	10-1/2	1-7/16	1.696 ^{+.012} _{-.000}	1.759 ^{+.013} _{-.000}	11/32	3/8	31/32	1	3/4	3/16	3/16	1072	981	8-1/2
AN8505-24	1-3/4 AND 1-13/16	10-1/2	1-7/16	1.759 ^{+.013} _{-.000}	1.822 ^{+.013} _{-.000}	3/8	3/8	1	1-3/64	3/4	3/16	3/16	981	856	8-1/2
AN8505-25	1-13/16 AND 1-7/8	11	1-17/32	1.822 ^{+.013} _{-.000}	1.885 ^{+.013} _{-.000}	3/8	3/8	1-3/64	1-3/32	3/4	3/16	3/16	1190	1072	9
AN8505-26	1-7/8 AND 1-15/16	11	1-17/32	1.885 ^{+.013} _{-.000}	1.948 ^{+.013} _{-.000}	3/8	13/32	1-3/32	1-1/8	3/4	3/16	3/16	1072	959	9

PROCUREMENT
SPECIFICATION

NONE

ARMY-NAVY AERONAUTICAL STANDARD

WRENCH - THIN DOUBLE END OPEN END

AN8505
SHEET 1 OF 2 SHEETS

APPROVED 20 SEP 44 REVISED