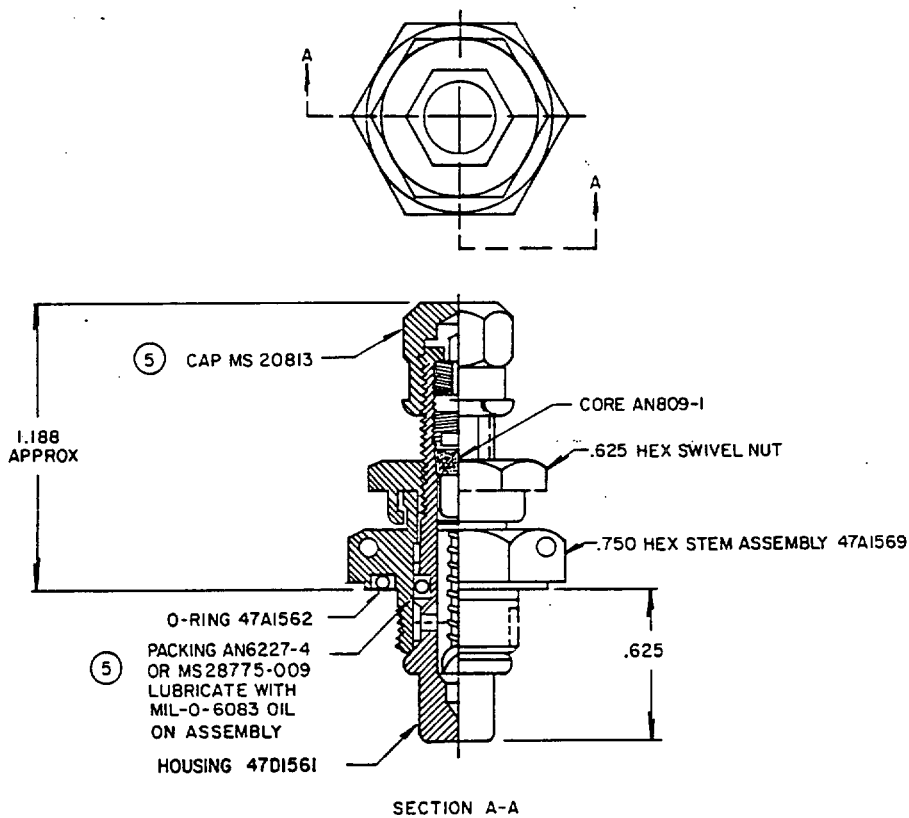


NOTICE-When Government drawings, specifications, or other data are used for any purpose other than in connection with a definitely related Government procurement operation, the United States Government thereby incurs no responsibility, nor any obligation whatsoever; and the fact that the Government may have formulated, furnished, or in any way supplied the said drawings, specifications, or other data is not to be regarded by implication or otherwise as in any manner licensing the holder or any other person or corporation, or conveying any rights or permission to manufacture, use, or sell any patented invention that may in any way be related thereto.

DISTRIBUTION STATEMENT A. Approved for public release; distribution is unlimited.
ARMC N/A

NOTE-This drawing was approved by joint action of the Air Force and Navy Department as the Air Force-Navy standard for this product. This drawing supersedes all antecedent standard drawings for the same product and shall become effective for the procurement of aeronautical supplies, or for use in new design, not later than six months after the latest date of approval shown.



AN PART NO.	WEIGHT MAX
AN6287-1	

⑤ INACTIVE FOR DESIGN AFTER 1 DECEMBER 1955.
SUPERSEDED BY MS28889.

REDUCTION OF THE .500-20 CLASS NF-3 THREAD TOLERANCE TO CLASS NF-2 THREAD TOLERANCE ON STEM ASSEMBLY DURING TESTING SHALL NOT BE CAUSE FOR REJECTION OF THE AN6287-1 ASSEMBLY DIMENSIONS IN INCHES.

FOR INSTALLATION REQUIREMENTS, SEE AND10071.

FOR MANUFACTURING DETAIL OF PARTS IDENTIFIED HEREON BY USAF DRAWING NUMBERS, SEE THE AN AERO STANDARD ISSUE OF THE RESPECTIVE USAF DRAWINGS.

FOR DEFINITION AND APPLICATION OF THE DRAWING STATUS NOTES SEE ANA BULLETIN NO. 337.

⑤ DENOTES CHANGES

P. A. AF-71 Other Cust AF-99	INTERNATIONAL INTEREST	AIR FORCE - NAVY AERONAUTICAL STANDARD	AN6287
ARMY - AV		VALVE - AIR HIGH PRESSURE 3/4 HEX	
PROCUREMENT SPECIFICATION MIL-V-6164	SUPERSEDES:		OF

DD FORM 1 MAY 73 672-1 (COORDINATED)

PREVIOUS EDITIONS OF THIS FORM ARE OBSOLETE

4820-0524

NOTES TO PRINTER: REDUCE BORDER TO 6 x 27-32 x 11-34. PRINT LEFT BORDER LINE ONE INCH FROM LEFT EDGE OF 8 x 10 - 1.2 SHEET. PRINT BOTTOM BORDER LINE 3/4 INCH FROM BOTTOM EDGE OF 8 x 10 - 1.2 SHEET.

DATE
3-1-88
DRAWN BY L. LAUDERDALE
TYPED BY
CHECKED BY

APPROVED 3 Sep 48 REVISED 1 28 Mar 49 2 1 Jun 54 3 1 Dec 55 4 6 Oct 58 5 15 JULY 1988