

INCH-POUND

AN6279 Rev 7
 21 April 2011
 SUPERSEDING
 AN6279 Rev 6
 01 July 1987

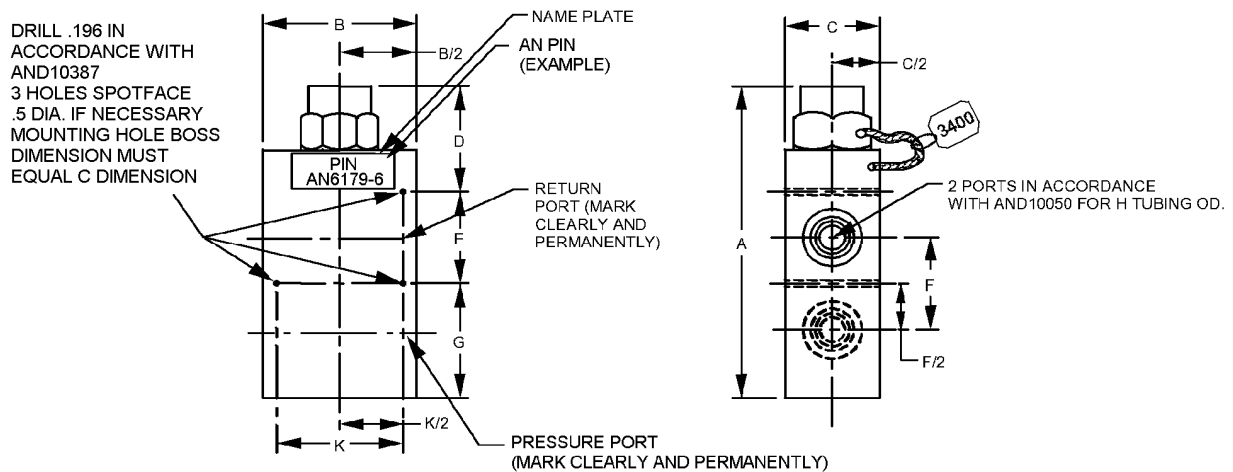
DETAIL SPECIFICATION SHEET

VALVE-HYDRAULIC PRESSURE RELIEF TWO PORT

Inactive for new design after 06 January 1961.

This specification is approved for use by all Departments and Agencies of the Department of Defense.

The requirements for acquiring the product described herein shall consist of this specification sheet and MIL-DTL-5523.



Part or Identifying Number (PIN)	H Tubing OD	A Max reference	B	C	D Max	E ±.005	F	G Max	K ±.005	Rated flow GPM min
AN6279-4XX	.25	4.4375	2.125	1.3125	1.500	1.312	1.3125	1.625	1.750	1.2
AN6279-6XX	.375	4.9375	2.375	1.75	1.625	1.5	1.500	1.8125	2.000	3.5
AN6279-8XX	.5	5.875	2.750	1.875	2.000	1.75	1.750	2.125	2.375	6.0
AN6279-12XX	.75	7.250	3.625	2.625	2.250	2.125	2.125	2.875	3.250	16.0

FIGURE 1. Valve - hydraulic pressure relief two port.

AN6279 Rev 7

Metric equivalents – millimeters – liters per minute (LPM)										
PIN	H Tubing OD	A Max reference	B	C	D Max	E ±.005	F	G Max	K ±.005	Rated flow LPM min
AN6279-4XX	6.35	112.71	53.98	33.34	38.10	33.33	33.34	41.28	44.45	4.54
AN6279-6XX	9.53	125.41	60.33	44.45	41.28	38.10	38.10	46.05	50.80	13.2
AN6279-8XX	12.70	149.23	69.85	47.63	50.80	44.45	44.45	53.98	60.33	22.7
AN6279-12XX	19.05	184.15	92.08	66.68	57.15	53.98	53.98	73.03	82.56	60.6

NOTES:

1. Dimensions are in inches.
2. Metric equivalents are given for information only.
3. Unless otherwise specified tolerances for three place decimals ±.010 inch (0.25 mm).

FIGURE 1. Valve - hydraulic pressure relief two port - Continued.

REQUIREMENTS

Dimensions, see figure 1.

PIN, see table I.

TABLE I. PIN.

PIN		
Pressure range PSI		
100 - 1000	1000 – 2300	2300 – 3850
AN6279-4YZ	AN6279-4AB	AN6279-4CD
AN6279-6YZ	AN6279-6AB	AN6279-6CD
AN6279-8YZ	AN6279-8AB	AN6279-8CD
AN6279-12YZ	AN6279-12AB	AN6279-12CD

Canceled PIN's. PIN's AN6279 -4Y, -6Y, -8Y, -12Y, -4Z, -6Z, -8Z and -12Z are canceled after 27 August 1953. There are no superseding AN PIN's.

Valve cracking pressure. For contractor's procurement only, the valve cracking pressure (as a code number in pounds per square inch) may be impressed on a lead seal or equivalent. And attached to the lockwire of the adjusting nut, in order to indicate a specified cracking pressure. The relief valve nameplate and applicable government records such as parts catalogs, spares, documents, etc. shall not contain this coded number indicating pressure setting. The services shall not procure or stock valves adjusted to any specific cracking pressure.

Pressure setting notation. Notations on aircraft contractor's assembly and installation drawings shall contain the proper AN number, as shown in table I, followed by the pressure setting parenthetically listed.

PIN example for government use: AN6279-6CD indicates a valve for pressure range 2300 to 3850 PSI, 3/8 inch tubing OD.

PIN example for contractor's drawings: AN6279-6CD(3400) indicates a valve for pressure range 2300 to 3850 PSI, 3/8 inch tubing OD, cracking pressure 3400 PSI.

AN6279 Rev 7

Valves adjustable to more than one class. Valves adjustable to the range of more than one class shall carry the designation of the lowest and highest class on the part number: for example, a valve adjustable from 1000 to 3850 PSI 3/8 inch tubing OD would be AN6279-6AD

Installation clearance. The aircraft or engine manufacture shall allow clearance for the maximum dimensions shown on this drawing for installation.

Changes from previous issue. Marginal notations are not used in this revision to identify changes with respect to the previous issue due to the extent of the changes.

Referenced documents. In addition to MIL-DTL-5515, this document references the following:

AND10050
AND10387

CONCLUDING MATERIAL

Custodians:

Army – GL
Navy - AS
Air Force - 99
DLA - CC

Preparing activity:
DLA - CC

(Project 1650-2010-008)

Review activities:

Army – AT, AV, CR4
Navy –MC, SA, SH
Air Force – 11, 71

NOTE: The activities listed above were interested in this document as of the date of this document. Since organizations and responsibilities can change, you should verify the currency of the information above using the ASSIST Online database at <https://assist.daps.dla.mil>.