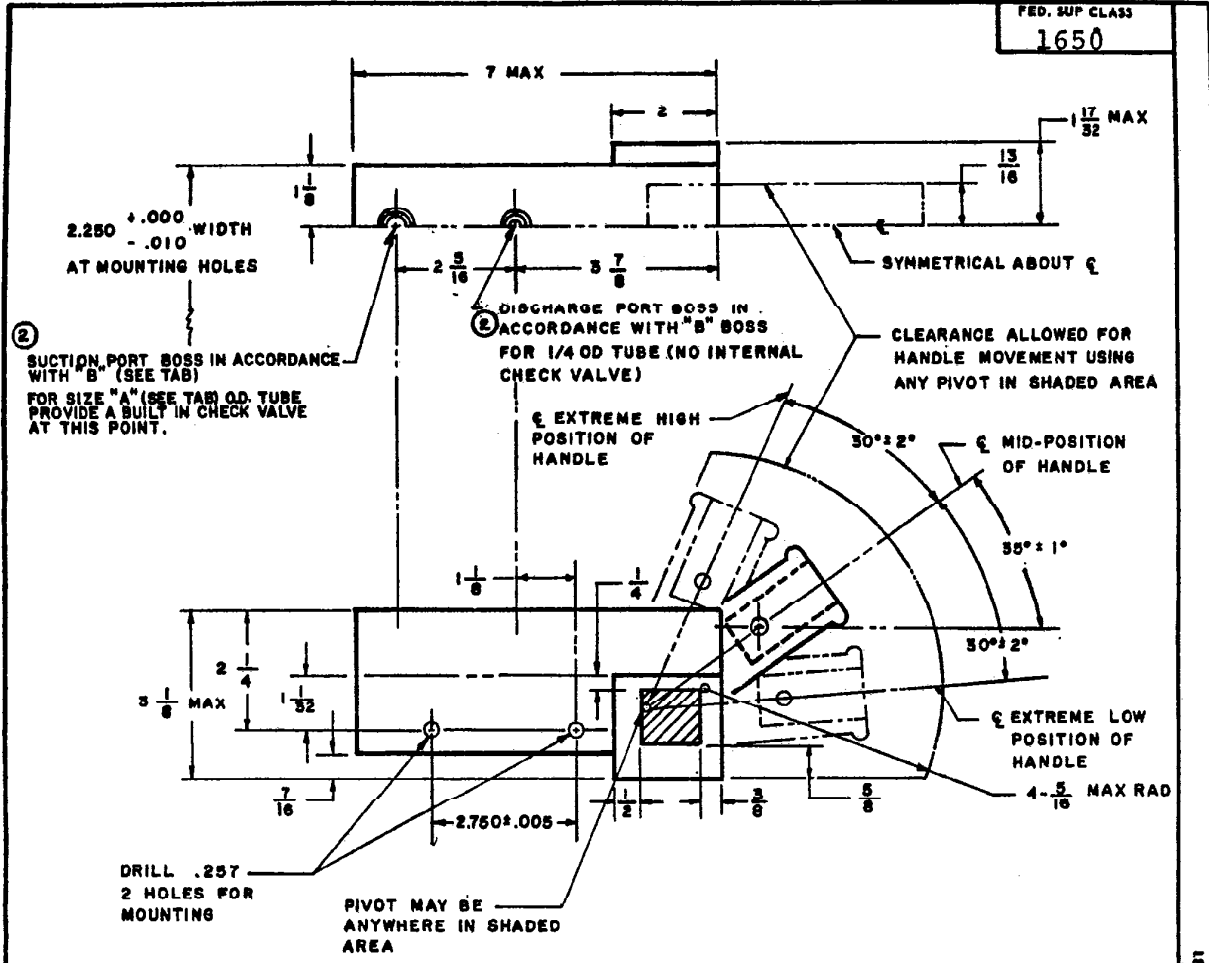
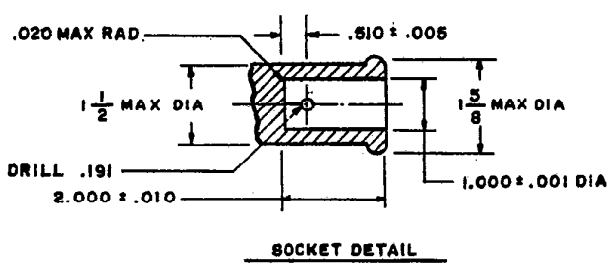


FED. SUP CLASS
1650



AN PART NO.	"A"	"B" BOSS
AN 6248-1	3/8	AND 10050
AN 6248-2	1/2	AND 10050
AN 6248-3	1/2	MS 33649



② AN6248-1 INACTIVE FOR NEW DESIGN AFTER 17 JAN 1949. USE AN6248-2
 AN6248-2 INACTIVE FOR NEW DESIGN AFTER 15 APR 1981. USE AN 6248-3
 AIR FORCE-NAVY BULLETIN NO. 113 LISTS PRODUCTS CONSIDERED SATISFACTORY UNDER THIS DRAWING
 AND THE PROCUREMENT SPECIFICATION.

DIMENSIONS IN INCHES. UNLESS OTHERWISE SPECIFIED, TOLERANCES: FRACTIONS ± 1/64, DECIMALS ± .010; ANGLES ± 1/2°.

② FOR DEFINITION AND APPLICATION OF DRAWING STATUS NOTES SEE AIA BULLETIN NO. 337.
 INTERCHANGEABILITY: AN6248-1, IS NOT INTERCHANGEABLE WITH THE -2 AND -3. AN 6248-3 MAY BE USED IN PLACE OF AN 6248-2.
 AN 6248-2 MAY NOT BE USED IN PLACE OF AN 6248-3

P. A. AIR FORCE-99 Other Cust AIR FORCE-99	TITLE PUMP-HYDRAULIC HAND, TYPE 3000	AN 6248
PROCUREMENT SPECIFICATION ② MIL-P-5515	SUPERSEDES: REVISION ① 17 JAN 49	SHEET 1 OF 1

REVISED ① 17 JAN 49 ② 15 APR 81 APPROVED 21 FEB 45