

INCH-POUND
 AN6027 REV 4
 26 March 2003
 SUPERSEDING
 AN6027 REV 3
 12 August 1977

DETAIL SPECIFICATION SHEET

COUPLING HALF, QUICK DISCONNECT

This specification is approved for use by all Departments and Agencies of the Department of Defense.

The requirements for acquiring the product described herein shall consist of this specification sheet and AN6027.

INACTIVE FOR NEW DESIGN AS
 OF 5 MAR 1999.

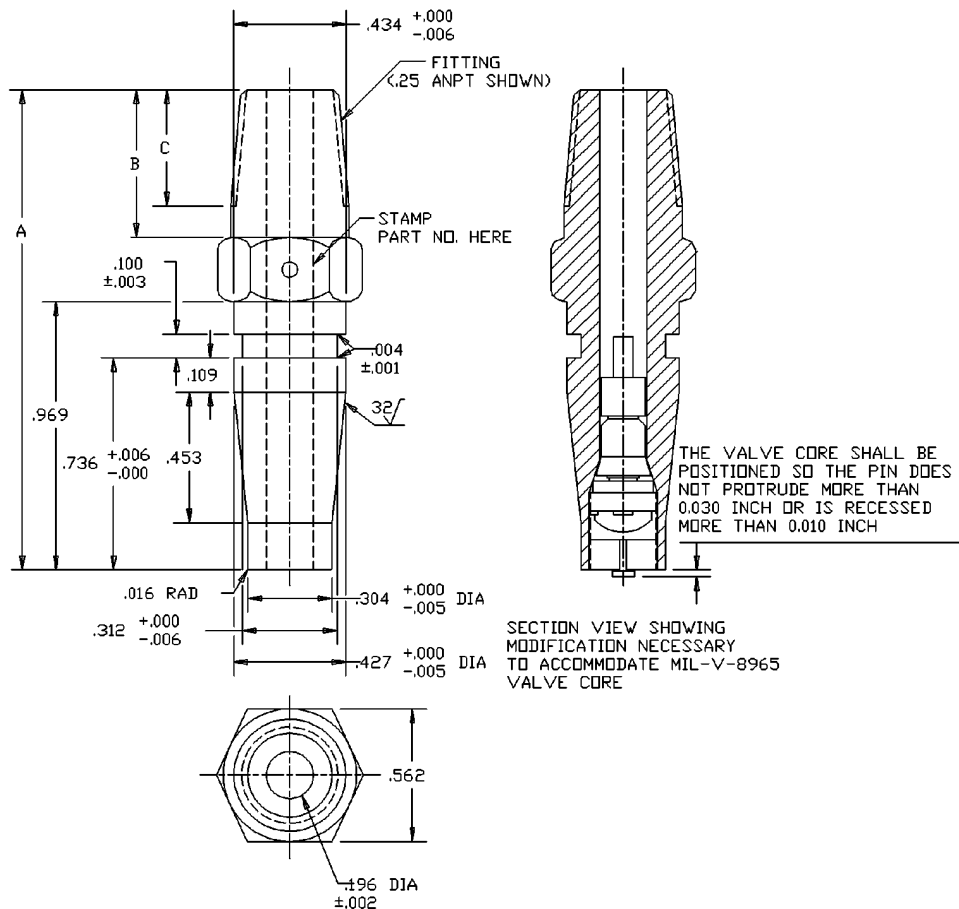


FIGURE 1. Coupling half, quick disconnect.

AN6027 REV 4

TABLE I. Coupling half, quick disconnect.

AN Part or Identifying Number (PIN)	Fitting	Size	A $\pm.005$	B	C
AN6027-1	SAE-AS5201	.25	1.743	.562	.438
AN6027-2	SAE-AS4395	4	1.731	.550	
AN6027-3	Do not use, use MIL-PRF-7891 P/N M7891LM-1				
AN6027-4	Do not use, use MIL-PRF-7891 P/N M7891LM-2				

REQUIREMENTS:

1. Dimensions and configurations: See figure 1 and table I.
2. Material: Low carbon steel. (See SAE J403, SAE No. 1213, and UNS No. G12130.)
3. Heat treat: Heat in cyanide 1450°F - 1500°F approximately 2 minutes, cool in air. Reheat in cyanide 1450°F -1500°F approximately 12 minutes. Quench in water. Temper at 450°F, minimum time at this temperature 30 minutes.
4. Surface: Surface roughness in accordance with ASME B46.1. Unless otherwise specified, maximum roughness shall be 63.
5. Finish: Zinc coating. (See ASTM B633, Type IV, SC 4.)
6. The coupling half shall be clean, dry, and free from oil, grease, or other foreign matter.
7. Break all sharp edges to provide minimum radius of .010.
8. For leakage requirements, see MIL-PRF-7891F for AN6027-3 and AN6027-4.

AN6027 REV 4

TABLE II. Inch to millimeter conversion.

Inches	mm	Inches	mm
.000	0.00	.304	7.72
.001	0.03	.312	7.92
.002	0.05	.427	10.85
.003	0.08	.434	11.02
.004	0.10	.438	11.13
.005	0.13	.453	11.51
.006	0.15	.550	13.97
.016	0.41	.562	14.27
.100	2.54	.736	18.69
.109	2.77	.969	24.61
.196	4.98	1.731	43.97
.25	6.35	1.743	44.27

NOTES:

1. Dimensions are in inches, unless otherwise specified, tolerances $\pm .010$.
2. Metric equivalents are given for general information only.
3. This coupling half is designed for use with MIL-PRF-7891 filler value.

CONCLUDING MATERIAL

Custodians:

Army - AV
 Navy - AS
 Air Force - 99
 DLA - CC

Preparing activity:

DLA - CC

(Project 4730-2173-000)

Review activities:

Navy - MC, SA
 Air Force - 06, 71