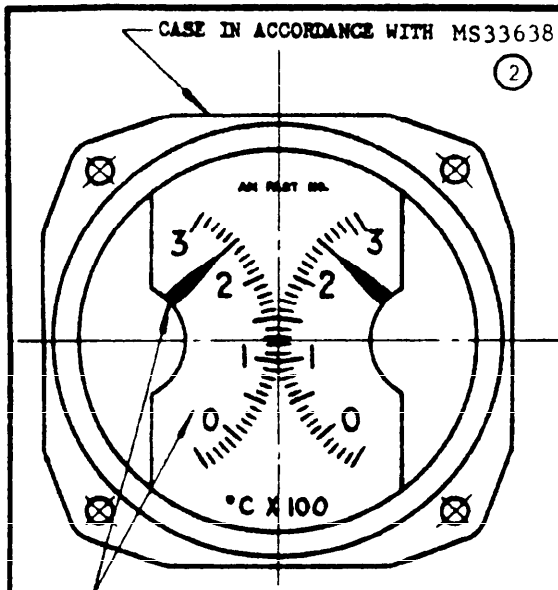
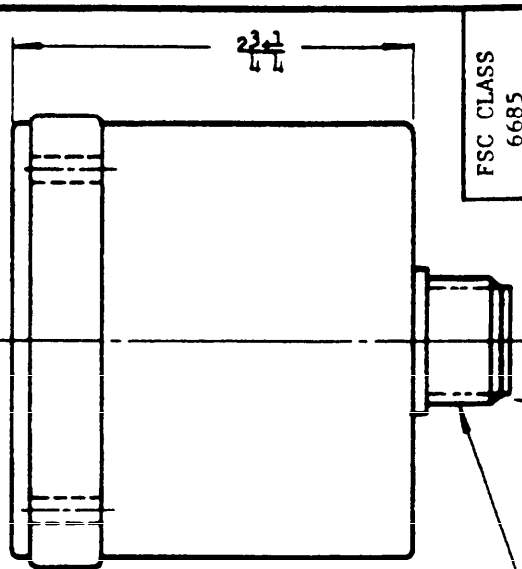


THIS DRAWING IS THE PROPERTY OF THE AIR FORCE. IT IS LOANED TO YOU BY THE AIR FORCE AND IS NOT TO BE REPRODUCED OR TRANSMITTED IN ANY FORM OR BY ANY MEANS, ELECTRONIC OR MECHANICAL, INCLUDING PHOTOCOPYING, RECORDING, OR BY ANY INFORMATION STORAGE AND RETRIEVAL SYSTEM, WITHOUT THE WRITTEN PERMISSION OF THE AIR FORCE. IT IS TO BE RETURNED TO THE AIR FORCE AT THE END OF THE LOAN PERIOD. IT IS TO BE KEPT IN A SAFE PLACE AND NOT TO BE DESTROYED OR DISPOSED OF IN ANY MANNER. IT IS TO BE KEPT IN A SAFE PLACE AND NOT TO BE DESTROYED OR DISPOSED OF IN ANY MANNER. IT IS TO BE KEPT IN A SAFE PLACE AND NOT TO BE DESTROYED OR DISPOSED OF IN ANY MANNER.



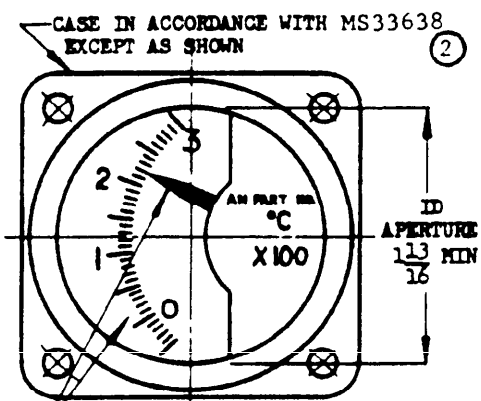
② DIAL AND POINTER SHOWN FOR REF ONLY. SEE PROCUREMENT SPEC FOR DETAIL REQUIREMENTS

AN5792-2



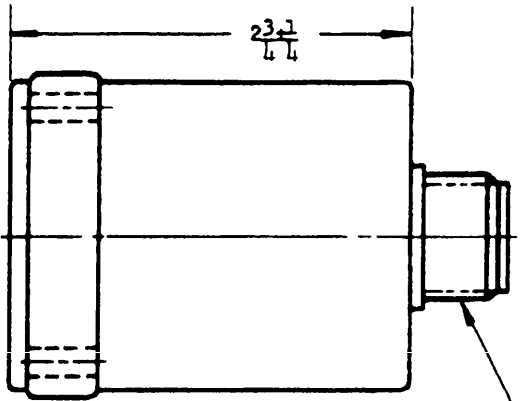
FSC CLASS
6685

② ELECTRICAL RECEPTACLE IN ACCORDANCE WITH MS33678-11S-2P. LOCATE ON VERTICAL AND HORIZONTAL CENTERLINE. POLARIZING PIN SHALL BE LOCATED AT TOP CENTER OF RECEPTACLE



② DIAL AND POINTER SHOWN FOR REF ONLY. SEE PROCUREMENT SPEC FOR DETAIL REQUIREMENT

AN5792-1



② ELECTRICAL RECEPTACLE IN ACCORDANCE WITH MS33678-10SL-3P. LOCATE ON VERTICAL AND HORIZONTAL CENTERLINE. POLARIZING PIN SHALL BE LOCATED AT TOP CENTER OF RECEPTACLE

② Superseded reference documents only.

AN PART NO.	TYPE
AN5792-1	GENERIC
AN5792-2	DUAL

① (a) PART NO. AN5792-1 INACTIVE FOR DESIGN AFTER 6 JANUARY 1953 . SEE DRAWING MS28004-1. FOR DEFINITION AND APPLICATION OF DRAWING STATUS NOTES, SEE ANA BULLETIN NO. 337. PART NUMBER SHOWN IS FOR INSTRUMENT WITH ATTACHED INSERT NUTS. ADD "T" BEFORE DASH NUMBER FOR INSTRUMENT WITH REMOVABLE SPRING NUTS. EXAMPLES OF PART NUMBERS: AN5792-1 = INDICATOR SUPPLIED WITH ATTACHED INSERT NUTS. AN5792T1 = INDICATOR SUPPLIED WITH REMOVABLE SPRING NUTS.

DIMENSIONS IN INCHES.

PROCUREMENT SPECIFICATION MIL-I-8505	AIR FORCE - NAVY AERONAUTICAL STANDARD INDICATOR - TEMPERATURE, ELECTRICAL-RESISTANCE, -50° TO +300°C	AN5792
---	---	--------

APPROVED 50 Nov 48 REVISED 1 6 Jun 53 2 15 Mar 76