

MIL-9-6150

PROCUREMENT
SPECIFICATION

AIR FORCE-NAVY AERONAUTICAL STANDARD

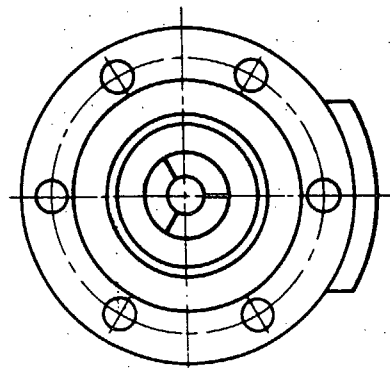
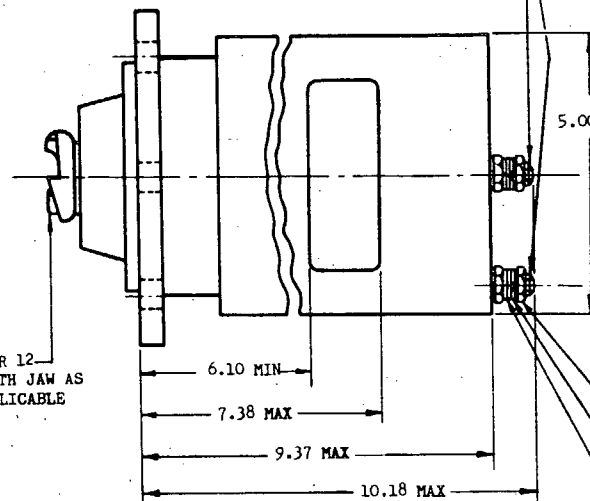
STARTER-AIRCRAFT, DIRECT CRANKING,

28 V DC

AN4116

SHEET 1 OF 3

Proj. No. 2925-0027

3 OR 12
TOOTH JAW AS
APPLICABLETERMINAL POST STUDS
THD 3/8-16 NC-3
2 REQD

5.00 MAX DIA

3.40 MAX RAD

3.40 MAX

NUT 3/8-16 NC-3 BRASS
4 REQD
WASHER AN935B616
2 REQD
WASHER AN960B616
4 REQDBRUSH INSPECTION
COVER LATCH ROTATABLE
THROUGH 360°

REAR VIEW

AN PART NO.	CLASS	(a) DIRECTION OF ROTATION	TYPE NUMBERS
			SUITABLE FOR USE ON DRIVE
			AND 20004
AN4116R1A	A	RIGHT HAND	XIV-A
AN4116L1A	A	LEFT HAND	XIV-A
(b) AN4116R2A	A	RIGHT HAND	XIV-E
(b) AN4116L2A	A	LEFT HAND	XIV-E
AN4116R1A1	A (1)	RIGHT HAND	XIV-A

(b) CANCELED AFTER 31 OCTOBER 1967. NO LONGER USED.

(a) AS VIEWED FROM END OPPOSITE MOUNTING PAD.

(b) PREVIOUS PART NUMBERS AN4116R1, L1, R2, L2, INACTIVE FOR DESIGN AFTER 17 MARCH 1952. PART NUMBERS AN4116R1A, L1A, R2A, L2A, REPLACE AND ARE INTERCHANGE-

ABLE WITH PART NUMBERS AN4116R1, L1, R2 AND L2, RESPECTIVELY.

FOR DEFINITION AND APPLICATION OF DRAWING STATUS NOTES, SEE ANA BULLETIN NO. 337.

RELATIONSHIP TO FLANGE MOUNTING HOLES SHALL BE AS INDICATED.

HARDNESS OF ALL STARTER JAWS SHALL BE ROCKWELL C-42-54.

FOR DETAILS OF MOUNTING FLANGE, DRIVE, AND WRENCH CLEARANCES, SEE PROCUREMENT SPECIFICATION.

DIMENSIONS IN INCHES. UNLESS OTHERWISE SPECIFIED, TOLERANCES: TWO-PLACE DECIMALS $\pm .02$, THREE-PLACE DECIMALS $\pm .010$, ANGLES $\pm 2^\circ$.

THE AIRPLANE AND ENGINE MANUFACTURER SHALL ALLOW CLEARANCE FOR THE MAXIMUM DIMENSIONS SHOWN ON THIS DRAWING FOR INSTALLATIONS.

SHEETS 2 AND 3 ADDED.

(6) FOR CHANGES SEE SHEETS 1, 2 & 3.

(6)

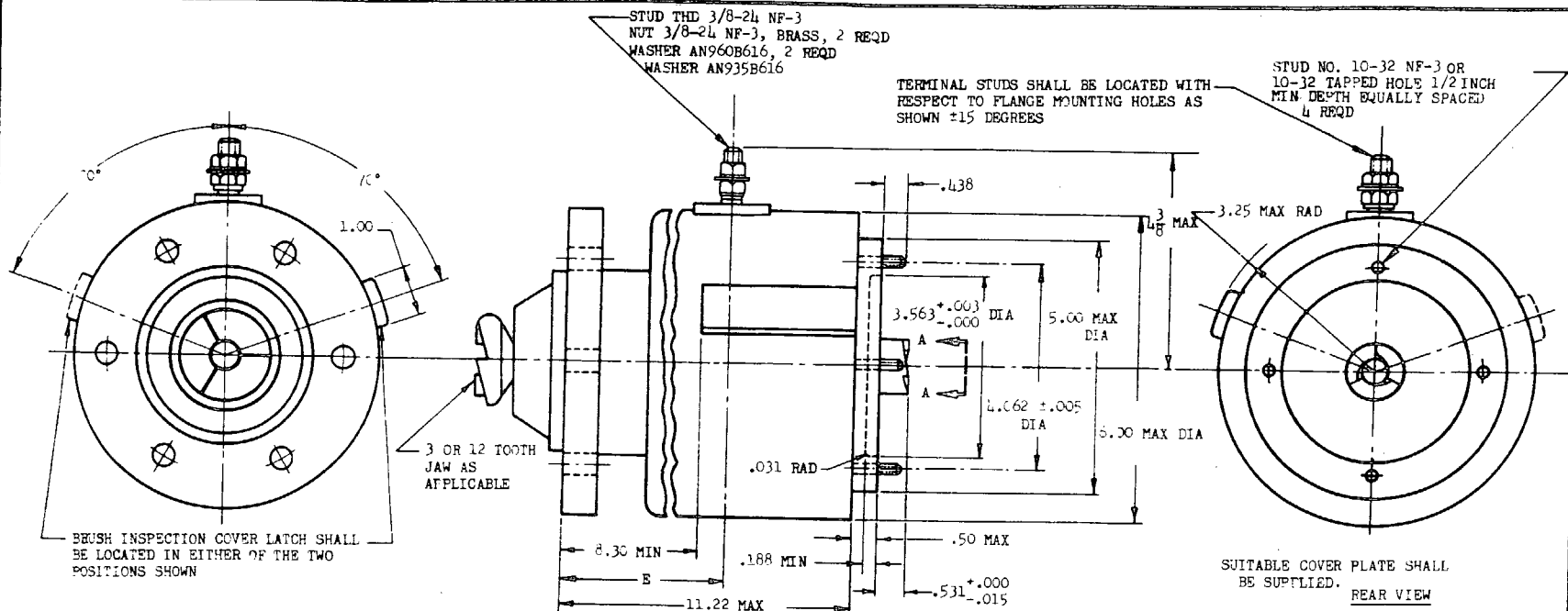
(6)

APPROVED 31 Jan 45 REVISED (1) 23 Apr 46 (2) 20 Dec 46 (3) 10 Nov 48 (4) 17 Mar 52 (5) 26 Nov 54 (6) 31 Oct 67

PSC
2925

PROCUREMENT
SPECIFICATION
MIL-S-6150AIR FORCE-NAVY AERONAUTICAL STANDARD
STARTER-AIRCRAFT, DIRECT CRANKING,
28 V DCSHEET 3
AN4116

Proj. No. 2925-0027



AN PART NO. SIDE TERMINAL	CLASS	(a) DIRECTION OF ROTATION	TYPE NO. SUITABLE FOR USE ON MOUNTING PAD IN ACCORDANCE WITH AND2000L	E
AN4116R3FA	B	RIGHT HAND	XIV-A	6.58 $\pm .24$
AN4116L3FA	B	LEFT HAND	XIV-A	
AN4116R4FA	B	RIGHT HAND	XIV-E	
(b) AN4116L4FA	B	LEFT HAND	XIV-E	8.41 $\pm .41$
(b) AN4116R5FA	D	RIGHT HAND	XIV-B	
(b) AN4116L5FA	D	LEFT HAND	XIV-B	
AN4116R6FA	C	RIGHT HAND	XIV-D	8.58 $\pm .24$
(b) AN4116L6FA	C	LEFT HAND	XIV-D	

- (6) (b) CANCELED AFTER 31 OCTOBER 1967. NO LONGER USED.
(a) AS VIEWED FROM END OPPOSITE MOUNTING PAD.

- (6) (c) PREVIOUS PART NUMBERS AN4116R3F THRU AN4116L6F INACTIVE FOR DESIGN AFTER 17 MARCH 1952. PART NUMBERS AN4116R3FA THRU AN4116L6FA, REPLACES AND ARE INTERCHANGEABLE WITH PART NUMBERS AN4116R3F THRU AN4116L6F RESPECTIVELY.

FOR DEFINITION AND APPLICATION OF DRAWING STATUS NOTES, SEE ANA BULLETIN NO. 337.
RELATIONSHIPS TO FLANGE MOUNTING HOLES SHALL BE AS INDICATED.

HARDNESS OF ALL STARTER JAWS SHALL BE ROCKWELL C-42-54.

FOR DETAILS OF MOUNTING FLANGE, DRIVE, AND WRENCH CLEARANCES, SEE DRAWING AND10264 AND THE PROCUREMENT SPECIFICATION.

DIMENSIONS IN INCHES. UNLESS OTHERWISE SPECIFIED, TOLERANCES: TWO-PLACE DECIMALS $\pm .02$, THREE-PLACE DECIMALS $\pm .010$, ANGLES $\pm 2^\circ$.
THE AIRPLANE AND ENGINE MANUFACTURER SHALL ALLOW CLEARANCE FOR THE MAXIMUM DIMENSIONS SHOWN ON THIS DRAWING FOR INSTALLATIONS.

APPROVED 10 Nov 48 REVISED (1) 17 Mar 52 (2) 26 Nov 54 (6) FOR CHANGES SEE SHEETS 1,2 AND 3.

PSC
2925

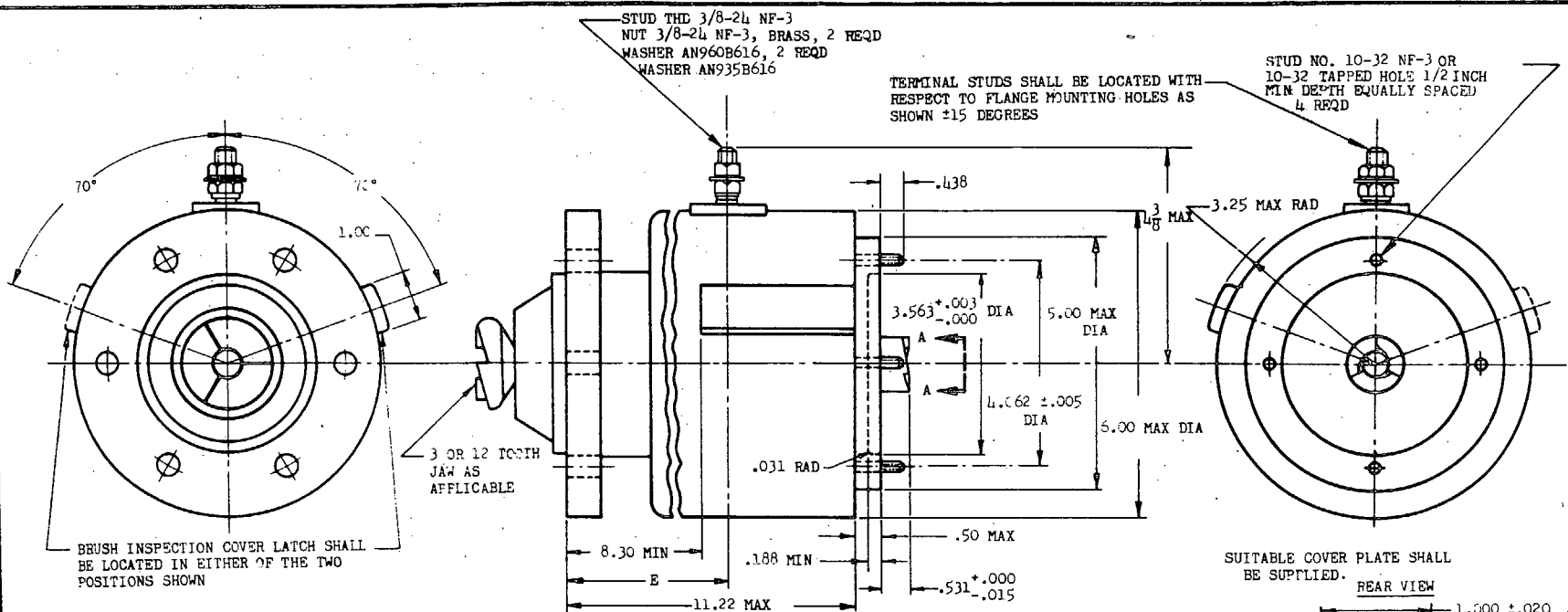
PROCUREMENT
SPECIFICATION
MIL-S-11510

AIR FORCE-NAVY AERONAUTICAL STANDARD
STARTER-AIRCRAFT, DIRECT CRANKING,
28 V DC

Proj. No. 2925-0027

SHEET 3

AN 4116



AN PART NO. SIDE TERMINAL	CLASS	(a) DIRECTION OF ROTATION	TYPE NO. SUITABLE FOR USE ON MOUNTING PAD IN ACCORDANCE WITH AND20004	E
AN4116R3FA	B	RIGHT HAND	XIV-A	8.58 \pm .24
AN4116L3FA	B	LEFT HAND	XIV-A	
AN4116R4FA	B	RIGHT HAND	XIV-E	
(b) AN4116L4FA	B	LEFT HAND	XIV-E	8.41 \pm .41
(c) AN4116R5FA	D	RIGHT HAND	XIV-B	
(d) AN4116L5FA	D	LEFT HAND	XIV-B	
AN4116R6FA	C	RIGHT HAND	XIV-D	8.58 \pm .24
(b) AN4116L6FA	C	LEFT HAND	XIV-D	

(b) CANCELED AFTER 31 OCTOBER 1967. NO LONGER USED.
(a) AS VIEWED FROM END OPPOSITE MOUNTING PAD.

(b) PREVIOUS PART NUMBERS AN4116R3F THRU AN4116L6F INACTIVE FOR DESIGN AFTER 17 MARCH 1952. PART NUMBERS AN4116R3FA THRU AN4116L6FA, REPLACE AND ARE
INTERCHANGEABLE WITH PART NUMBERS AN4116R3F THRU AN4116L6F, RESPECTIVELY.

FOR DEFINITION AND APPLICATION OF DRAWING STATUS NOTES, SEE ANA BULLETIN NO. 337.
RELATIONSHIPS TO FLANGE MOUNTING HOLES SHALL BE AS INDICATED.

HARDNESS OF ALL STARTER JAWS SHALL BE ROCKWELL C-22-54.

FOR DETAILS OF MOUNTING FLANGE, DRIVE, AND WRENCH CLEARANCES, SEE DRAWING AND10264 AND THE PROCUREMENT SPECIFICATION.

DIMENSIONS IN INCHES. UNLESS OTHERWISE SPECIFIED, TOLERANCES: TWO-PLACE DECIMALS \pm .02, THREE-PLACE DECIMALS \pm .010, ANGLES $\pm 2^\circ$.

THE AIRPLANE AND ENGINE MANUFACTURER SHALL ALLOW CLEARANCE FOR THE MAXIMUM DIMENSIONS SHOWN ON THIS DRAWING FOR INSTALLATIONS.

APPROVED 10 Nov 48 REVISED (1) 17 Mar 52 (2) 26 Nov 54 (6) FOR CHANGES SEE SHEETS 1, 2 AND 3.

PSC
2925