

INCH-POUND

AN3308

REVISION 6

7 June 2011

SUPERSEDING

REVISION 5

15 January 2002

DETAIL SPECIFICATION SHEET

RELAY, 10 AMP, 3 PDT, SEALED,
CONNECTOR MOUNTING, CLASS O

Inactive for new design after 17 November 1954. No superseding document.

This specification is approved for use by all Departments and Agencies of the Department of Defense.

The requirements for acquiring the relay described herein shall consist of this specification and MIL-PRF-6106.

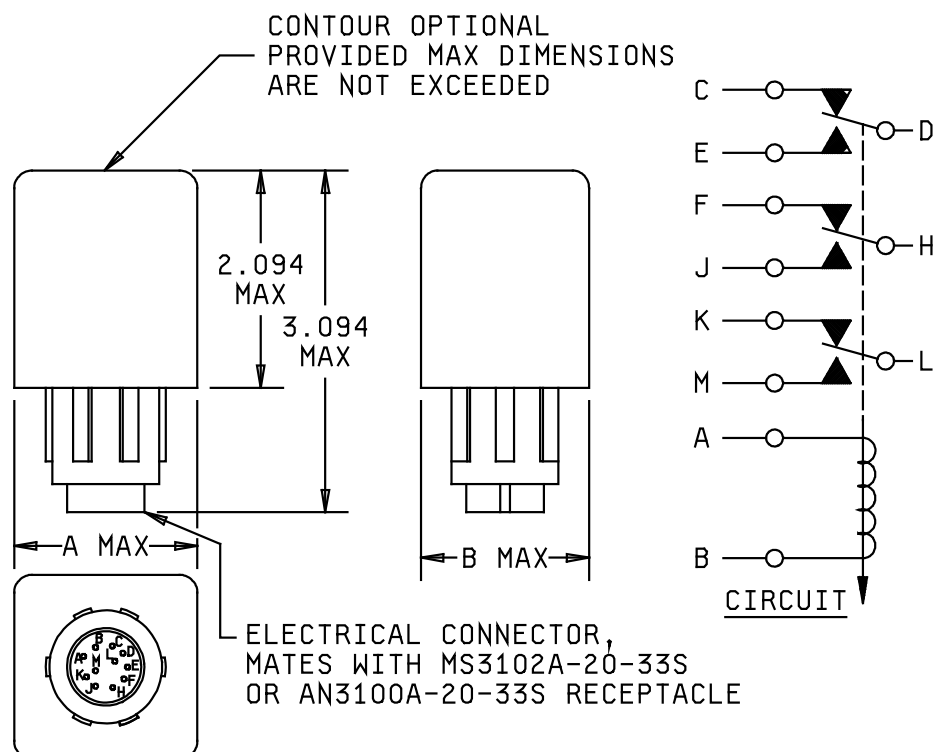


FIGURE 1. Configurations and dimensions.

AN3308
REVISION 6

AN Part Number	A (MAX)	B (MAX)
AN3308-1	2.094	1.718
AN3308-2	2.188	1.813

Inches	mm
.016	0.040
1.719	4.366
1.813	4.604
2.094	3.094
2.188	5.556

NOTES:

1. Dimensions are in inches.
2. Metric equivalents are given for general information only.
3. Unless otherwise specified, tolerance are ± 0.005 (0.013 mm).

FIGURE 1. Configurations and dimensions - Continued.

REQUIREMENTS

Operating cycles: 50,000 minimum.

Contact data:

Contact voltage drop:

Initial: 0.150 volt maximum. Applicable only for AN3308-2.

After life: 0.175 maximum. Applicable only for AN3308-2.

Load ratings: See Table I.

TABLE I - Rated contact load (per pole).

Type of load	Amperes
Resistive (DC)	10
Resistive (AC 400 Hz, 115 volts)	10
Inductive	10
Motor	6

Overload current: See MIL-PRF-6106. Not applicable to AN3308-1.

Rupture current: See MIL-PRF-6106. Not applicable AN3308-1.

AN3308
REVISION 6

Coil data:

Nominal coil voltage: 28 volts.
Maximum operating voltage: 29 volts.
Pickup voltage: 18 volts.
Dropout voltage: 2 volts, minimum; 7 volts, maximum.
Rated duty: Continuous.
Coil current: 0.35 amperes, maximum.

Physical data:

Weight: 0.6 pounds, maximum.
Qualification by similarity: See MIL-PRF-6106.
Retention of qualification: To retain qualification, the manufacturer shall submit group A acceptance reports on a yearly basis to the qualifying activity.
Quality conformance inspection: Performance of groups B and C tests are not applicable.
Part or Identifying Number (PIN): AN3308-1 and AN3308-2.
AN3308-2 relays shall meet the mixed loads current requirements specified in MIL-PRF-6106. The relay shall be equipped with a glass to metal sealed electrical connector.
Supersession information: Supersedes USAF Drawing 50B6185.

Referenced documents

MIL-PRF-6106

Marginal notations are not used in this revision to identify changes with respect to the previous issue due to the extent of the changes.

Custodian:
Air Force - 85
DLA - CC

Preparing activity:
DLA - CC

Review activity:
Air Force - 99

(Project 5945-2011-019)

NOTE: The activities listed above were interested in this document as of the date of this document. Since organizations and responsibilities can change, you should verify the currency of the information above using the ASSIST Online database at <https://assist.daps.dla.mil/>.