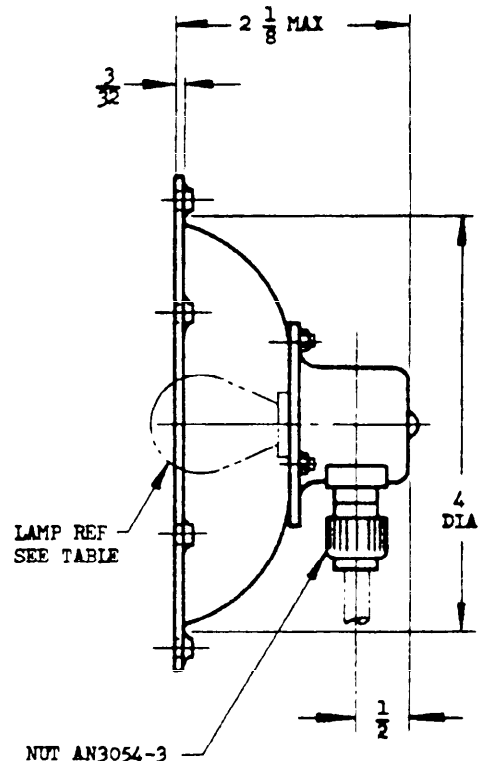
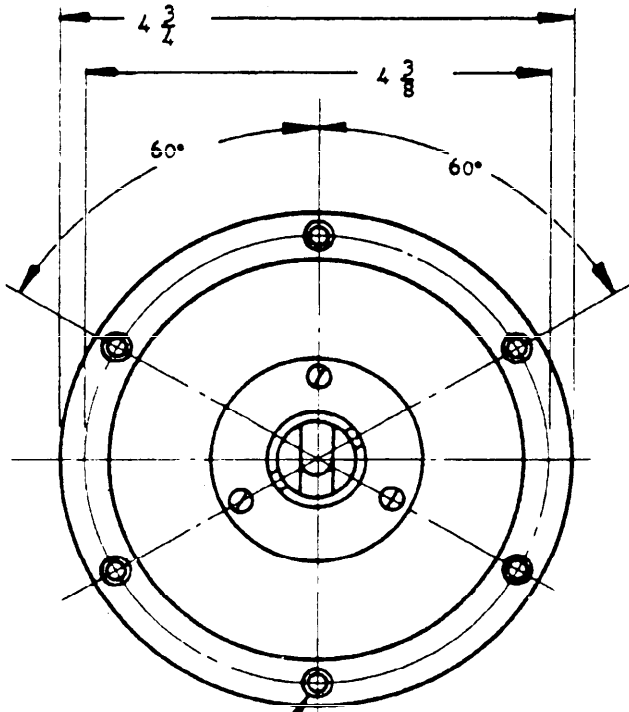


NAVAER 6000C

FSC  
6220

NOTICE - When Government drawings, specifications, or other data are used for any purpose other than in connection with a definitely related Government procurement operation, the Government and its agencies assume no responsibility for any and all rights or patentability to manufacturers, inventors, or other persons in any manner becoming the holder or any other person or corporation, or conveying any rights or patentability to manufacturers, inventors, or other persons in any way be related thereto.

NOTE - This drawing was approved by joint action of the Air Force and Navy Department as the standard drawing for the same product and shall become effective for the procurement of aeronautical supplies, or for use in new design, and later than at month after the latest date of approval shown.



5/32 DIA  
CSINK 100° FOR  
NO. 6 SCREW  
6 MOUNTING  
HOLES

NUT AN3054-3

| AN ASSEMBLY<br>PART NO. | LAMP REF     |         |
|-------------------------|--------------|---------|
|                         | AN PART NO.  | VOLTAGE |
| AN3049-1                | AN3124SB1141 | 13      |
|                         | AN3124SB307  | 28      |
|                         | AN3133R311   | 28      |

WEIGHT: .16 LB MAX.

PART NUMBER SPECIFIED IS FOR LIGHT ASSEMBLY WITHOUT LAMP. IF SHIPMENT WITH LAMP INSTALLED IS DESIRED, THE PART NUMBER OF THE LAMP SHOULD BE SPECIFIED.

DIMENSIONS IN INCHES. DIMENSIONS ARE FOR REFERENCE ONLY.

THIS DRAWING IS FOR REFERENCE AND STOCK PURPOSES ONLY. FOR MANUFACTURING DETAILS SEE AN AERO STD ISSUE OF DRAWING NAF 311907.

Ⓢ INACTIVE FOR DESIGN AFTER 3 JANUARY 1967.  
NO SUPERSEDING STANDARD.

PROCUREMENT  
SPECIFICATION  
MIL-L-6723

AIR FORCE-NAVY AERONAUTICAL STANDARD

LIGHT ASSEMBLY - OPEN CABIN DOME

AN3049

APPROVED 5 Nov 45 REVISED 1 19 Aug 53 2 3 Jan 67