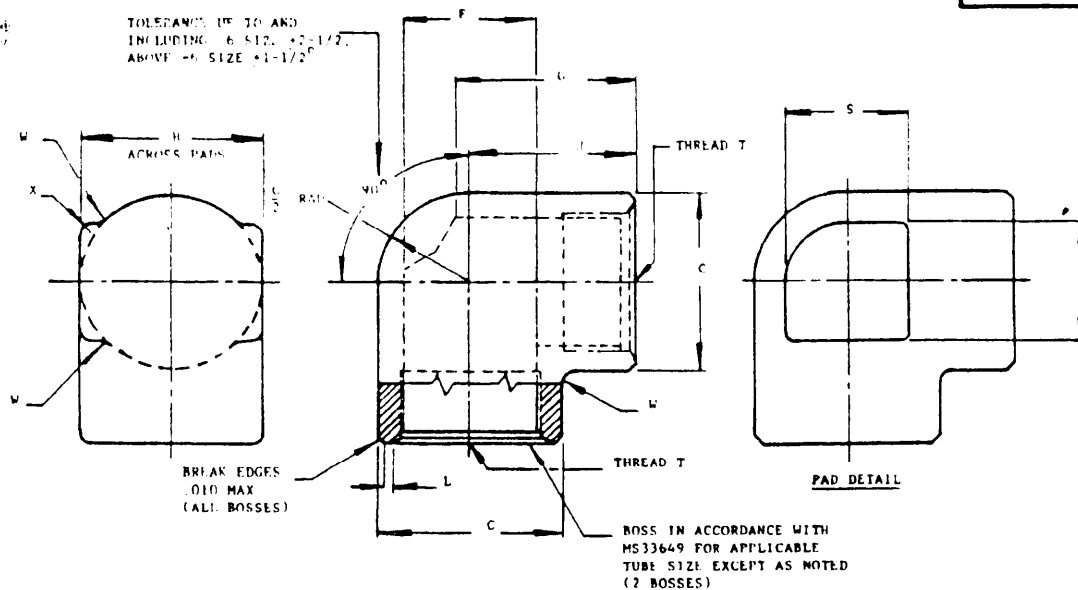


This military standard is approved for use by all Departments and Agencies of the Department of Defense Selection for all new engineering and design applications and for repetitive use shall be made from this document



SQUARENESS BETWEEN THREAD T AND FACE OF BOSS SHALL CONFORM TO MS33649 AS SPECIFIED
MATERIAL STEEL, ALUMINUM ALLOY; SHAPES OR FORGINGS.
CORROSION RESISTANT STEEL (CRES), TITANIUM ALLOY; BARS, SHAPES, OR FORGINGS.
SEE PROCUREMENT SPECIFICATION.

FINISH: SEE PROCUREMENT SPECIFICATION

NO CODE LETTER IN PART NUMBER FOR STEEL

ADD D IN PLACE OF DASH FOR ALUMINUM ALLOY (EXCEPT 7075-T73).

ADD J IN PLACE OF DASH FOR CRES, TYPE 304.

ADD K IN PLACE OF DASH FOR CRES. TYPE 316

ADD S IN PLACE OF DASH FOR CRES. TYPE 367. PARTS ARE NOT TO BE MANUFACTURED FROM TYPE 304L STEEL AFTER 10 FEBRUARY 1967

ADD T IN PLACE OF DASH FOR TITANIUM ALLOY. TITANIUM IS NOT RECOMMENDED FOR USE IN OXYGEN SYSTEMS.

ADD W IN PLACE OF DASH FOR 7075-T73 ALUMINUM ALLOY

ITEMS CODED C ON PREVIOUS ISSUES OF THIS STANDARD ARE NO LONGER TO BE FURNISHED. PROCURING ACTIVITIES MUST SPECIFY APPLICABLE CRES MATERIAL CODE AS PART OF THE STANDARD PART NUMBER.

EXAMPLES OF PART NUMBERS

AN939-8 - ELBOW, 1/2 TUBING, STEEL.

AN939D8 - ELBOW, 1/2 TUBING, ALUMINUM ALLOY (EXCEPT 7075-T73)

AN93918 - FLOW, 1/2 TUBING, CRES. TYPE 304

AN9101A - ELBOW, 1/2 TURBINE, CRES, TYPE 304.
AN9101B - ELBOW, 1/2 TURBINE, CRES, TYPE 316.

AN919SE - FLARE, 1/2 TUBING, PRES. TYPE 347

AN91916 - ELBOW 1/2 TUBING, TITANIUM ALLOY

AN939W8 - ELBOW 1/2 TUBING, 2025-T3 ALUMINUM ALLOY

BREAK ALL SHARP EDGES AND REMOVE ALL HANGING BURRS AND SLIVERS.

DIMENSIONS IN INCHES. UNLESS OTHERWISE SPECIFIED, TOLERANCE: FRACTIONS $\pm 1/64$

ALUMINUM ALLOY FITTINGS, SIZES -10 THROUGH -20, SHALL NOT BE USED AT WORKING PRESSURES ABOVE 1500 PSI

ALUMINUM ALLOY FITTINGS, SIZES -10 THROUGH -20, SHALL NOT BE USED AT WORKING PRESSURES ABOVE 1500 PSI FOR DESIGN FEATURE PURPOSES. THIS STANDARD TAKES PRECEDENCE OVER PROCUREMENT DOCUMENTS REFERENCED HEREIN.

FOR DESIGN FEATURE PURPOSES, THIS STANDARD TAKES PRECEDENCE OVER PROCUREMENT DOCUMENT
REFERENCED DOCUMENTS SHALL BE OF THE ISSUE IN EFFECT ON DATE OF INVITATIONS FOR BID

⑦ ENTIRE STANDARD REVISED

P. A. ⑦ Air Force - 82 Other Cost Air Force - 99	INTERNATIONAL INTEREST	TITLE FLANG. TUBE, INTERNAL THREAD, 90°	MILITARY STANDARD	
			AN 939	
PROCUREMENT SPECIFICATION MIL-F-5509	SUPERSEDES: AN 927	SHEET 1 OF 2		

DD FORM 672-1 (COORDINATED)

PREVIOUS EDITIONS OF THIS FORM ARE OBSOLETE

PROJECT 4730-0208

22 Mar 34

REVISED ⑦

27 JAN 50

1

USER ACTIVITIES: ARMY - MT

REVIEWER ACTIVITIES: ARMY - ME, AV,
DLA - CS

This military standard is approved for use by all Departments and Agencies of the Department of Defense. Selection for all new engineering and design applications and for repetitive use shall be made from this document.

P. A. Air Force - '82' Other Cost Air Force - 99		INTERNATIONAL INTEREST	TITLE ELBOW, TUBE, INTERNAL THREAD, 90°		MILITARY STANDARD AN939	
PROCUREMENT SPECIFICATION MIL-F-5509		SUPERSEDES: AN937			SHEET 2 OF 2	

DASH NO.	TUBING OD	TUBE L (REF)	C DIA	F OD DIA	G OD DIA	H OD DIA	I OD DIA	J OD DIA	K OD DIA	L OD DIA	M OD DIA	N OD DIA	WEIGHT MAX (LBS.)		
													STEEL	ALLOY	ALLOY
4	1 1/2	7/16-20UNF-3B	13/16	3/2	13/16	7/8	1 1/16	1 1/8	1 1/4	1 1/2	1 3/4	2 1/8	1 1/8		
5	1 3/4	3/2-20UNF-3B	3/4	4/5	13/16	7/8	1 1/16	1 1/8	1 1/4	1 1/2	1 3/4	2 1/8	1 1/8		
6	2	9/16-18UNF-3B	13/16	5/8	13/16	7/8	1 1/16	1 1/8	1 1/4	1 1/2	1 3/4	2 1/8	1 1/8		
8	1 1/2	3/4-16UNF-3B	1 1/16	6/7	1 1/16	1 1/16	1 1/16	1 1/8	1 1/4	1 1/2	1 3/4	2 1/8	1 1/8		
10	5/8	7/8-14UNF-3B	1 1/16	8/7	1 1/16	1 1/16	1 1/16	1 1/8	1 1/4	1 1/2	1 3/4	2 1/8	1 1/8		
12	3/4	1 1/16-12UNF-3B	1 1/16	9/7	1 1/16	1 1/16	1 1/16	1 1/8	1 1/4	1 1/2	1 3/4	2 1/8	1 1/8		
16	1	1 1/16-12UNF-3B	1 1/16	1 2/7	1 1/16	1 1/16	1 1/16	1 1/8	1 1/4	1 1/2	1 3/4	2 1/8	1 1/8		
20	1 1/4	1 1/8-12UNF-3B	2	1 5/7	1 1/16	1 1/16	1 1/16	1 1/8	1 1/4	1 1/2	1 3/4	2 1/8	1 1/8		

FED. SUP CLASS
4730

APPROVED 27 JAN 50 REVISED 7 For changes see pages 1 and 2

DD FORM 672-1 (COORDINATED)

PREVIOUS EDITIONS OF THIS FORM ARE OBSOLETE

PROJECT 4730-0208