

INCH-POUND

AN841 Rev 6
7 June 2011
SUPERSEDING
AN841 Rev 5
19 April 1982

DETAIL SPECIFICATION SHEET

ADAPTER - HOSE TO FLARED TUBE

Reinstated after 7 June 2011. Inactive for new design.
For new design, use SAE-AS5184.

This specification is approved for use by all Departments and
Agencies of the Department of Defense.

The requirements for acquiring the product described herein shall consist of this specification sheet
and SAE-AS4843/1.

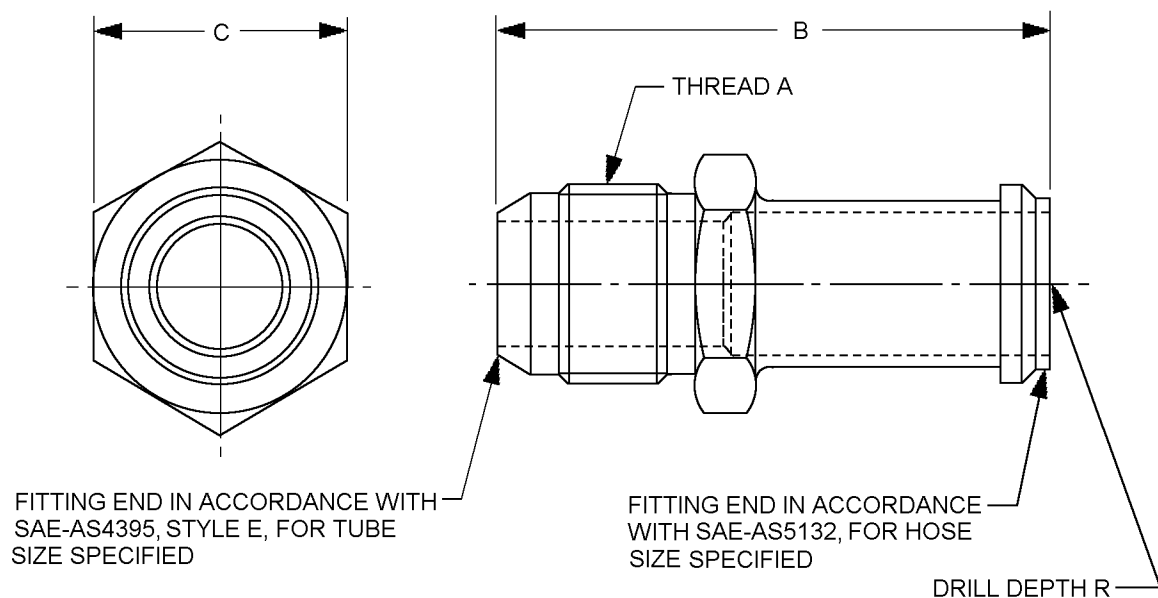


FIGURE 1. Adapter, dimensions and configuration.

AN841 Rev 6

Dash number	Hose ID inches (mm)	Tube OD inches (mm)	Thread A	B ±.031 (0.79) inches (mm)
4	.250 (6.35)	.250 (6.35)	.4375-20UNJ-3A	2.250 (57.15)
6	.375 (9.53)	.375 (9.53)	.5625-18UNJ-3A	2.313 (58.75)
8	.500 (12.70)	.500 (12.70)	.7500-16UNJ-3A	2.438 (61.93)
10	.625 (15.88)	.625 (15.88)	.875-14UNJ-3A	2.563 (65.10)
12	.750 (19.05)	.750 (19.05)	1.0625-12UNJ-3A	2.688 (68.28)
16	1.000 (25.40)	1.000 (25.40)	1.3125-12UNJ-3A	2.781 (70.64)

Dash number	C ±.005 (0.13) inches (mm)		R ±0.16 (0.41) inches (mm)
4	.688 (17.48)	+.004 (0.10) -.006 (0.15)	1.625 (41.28)
6	.813 (20.65)		
8	1.000 (25.40)		
10	1.125 (28.58)	+.005 (0.13) -.006 (0.15)	
12	1.375 (34.93)	-.006 (0.15)	
16	1.625 (41.28)	+.008 (0.20) -.016 (0.41)	

NOTES:

1. Dimensions are in inches.
2. Metric equivalents are given for information only.
3. Break sharp edges and remove all hanging burrs and slivers
4. Machined surfaces shall be finished to 125 μ in Ra, forged surfaces shall be 250 μ inches Ra, unless otherwise specified on the figures. Surface finish shall be in accordance with ASME B46.1.
5. For design features purposes, this standard takes precedence over documents referenced herein.

FIGURE 1. Adapter, dimensions and configuration - Continued.

AN841 Rev 6

REQUIREMENTS:

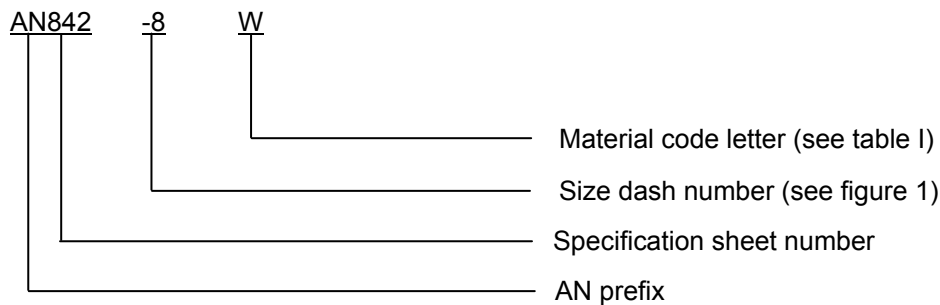
Adapter dimensions and configuration shall be in accordance with figure 1.

Materials and finishes shall be in accordance with SAE-AS4843/1, see table I for material codes.

TABLE I. Material and code letters.

Code letter	Material
Blank	Copper alloy
J	CRES, type 304
K	CRES, type 316
R	CRES, type 321
S	CRES, type 347
W	Aluminum alloy 7075-T73

Part or Identifying Number (PIN): The PIN consists of the letter “AN” the specification sheet number, a dash number for tube and port size, and a material code letter for material type. Unassigned PIN's shall not be used.



PIN example: AN842-8W indicates an adapter, hose to flared tube, .500 inch (.12.70 mm), aluminum alloy 7075-T73.

Supersession data. The aluminum “D” designator has been replaced by the “W” designator.

Marking: Part shall be permanently marked with the AN PIN, and include the manufacturers CAGE, name, or trademark.

Table II provides a detailed cross-reference of AN841 PINs and replacement SAE-AS5184 PINs. Users are cautioned to evaluate replacements for their particular application.

CAUTION: The superseding information is valid as of the date of this specification and may be superseded by subsequent revisions of the superseding document.

AN841 Rev 6

TABLE II. Cross-reference data. 1/

AN PIN	Tube Size	Replacement AS PIN	New design
AN841-4	.250	AS5184B04	AS5184W04
AN841-4D	.250	AS5184W04	
AN841-4J	.250	AS5184J04	
AN841-4K	.250	AS5184K04	AS5184R04
AN841-4R	.250	AS5184R04	
AN841-4S	.250	AS5184R04	
AN841-4W	.250	AS5184W04	
AN841-6	.375	AS5184B06	AS5184W06
AN841-6D	.375	AS5184W06	
AN841-6J	.375	AS5184J06	
AN841-6K	.375	AS5184K06	AS5184R06
AN841-6R	.375	AS5184R06	
AN841-6S	.375	AS5184R06	
AN841-6W	.375	AS5184W06	
AN841-8	.500	AS5184B08	AS5184W08
AN841-8D	.500	AS5184W08	
AN841-8J	.500	AS5184J08	
AN841-8K	.500	AS5184K08	AS5184R08
AN841-8R	.500	AS5184R08	
AN841-8S	.500	AS5184R08	
AN841-8W	.500	AS5184W08	
AN841-10	.625	AS5184B10	AS5184W10
AN841-10D	.625	AS5184W10	
AN841-10J	.625	AS5184J10	
AN841-10K	.625	AS5184K10	AS5184R10
AN841-10R	.625	AS5184R10	
AN841-10S	.625	AS5184R10	
AN841-10W	.625	AS5184W10	
AN841-12	.750	AS5184B12	AS5184W12
AN841-12D	.750	AS5184W12	
AN841-12J	.750	AS5184J12	
AN841-12K	.750	AS5184K12	AS5184R12
AN841-12R	.750	AS5184R12	
AN841-12S	.750	AS5184R12	
AN841-12W	.750	AS5184W12	
AN841-16	1.000	AS5184B16	AS5184W16
AN841-16D	1.000	AS5184W16	
AN841-16J	1.000	AS5184J16	
AN841-16K	1.000	AS5184K16	AS5184R16
AN841-16R	1.000	AS5184R16	
AN841-16S	1.000	AS5184R16	
AN841-16W	1.000	AS5184W16	

1/ For new design use material designator R or W.

AN841 Rev 6

Changes from previous issues. Marginal notations are not used in this revision to identify changes with respect to the previous issue due to the extent of the changes.

Referenced documents. In addition to SAE-AS4843/1, this document references the following:

ASME B46.1
SAE-AS4395
SAE-AS5132
SAE-AS5184

CONCLUDING MATERIAL

Custodians:

Army - AV
Navy - AS
Air Force - 99
DLA - CC

Preparing activity:

DLA - CC

(Project 4730-2011-056)

Review activity:

Air Force - 71

NOTE: The activities listed above were interested in this document as of the date of this document. Since organizations and responsibilities can change, you should verify the currency of the information above using the ASSIST Online database at <https://assist.daps.dla.mil>.