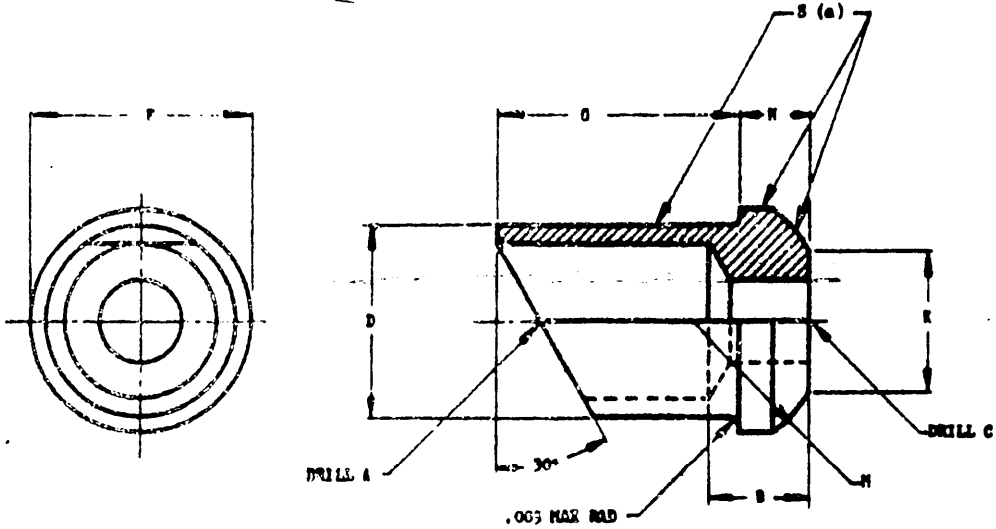


1. This drawing is the property of the Government and is loaned to your organization for information only. It is not to be distributed outside your organization. 2. This drawing is the property of the Government and is loaned to your organization for information only. It is not to be distributed outside your organization. 3. This drawing is the property of the Government and is loaned to your organization for information only. It is not to be distributed outside your organization. 4. This drawing is the property of the Government and is loaned to your organization for information only. It is not to be distributed outside your organization. 5. This drawing is the property of the Government and is loaned to your organization for information only. It is not to be distributed outside your organization.



DASH NO.	BRASS	COPPER RES STEEL	NICKEL COPPER ALLOY	TUBE OD	A DIA	B	O DIA	D +.000 -.004 DIA	F +.000 -.004 DIA	G	H	I DIA	N TUBE RAD	WEIGHT MAX		
														BRASS	COPPER RES STEEL	NICKEL COPPER ALLOY
(c) 2	G2	N2		.125	.1205	.150	.076	.165	.265	.375		.125	.141			
3				.188	.191		.140	.250	.320	.434	.125	.172	.172			
4				.250	.257	.188	.157	.312	.375	.500		.203	.203			
5				.312	.323		.219	.375	.437	.594		.248	.248			
6				.375	.386	.219	.281	.449	.547	.719	.156	.328	.328			
(d) 8				.500	.516	.250	.406	.594	.672	.906	.188	.453	.422			
10				.625	.641	.281	.531	.715	.844	1.031	.219	.584	.548			
12				.750	.766	.312	.625	.895	1.000	1.188	.250	.659	.622			
(b) 16				1.000	1.026	.500	.875	1.125	1.375	1.625	.375	.959	.811			

- (a) SURFACES "S" MUST RUN TRUE WITH EACH OTHER WITHIN .002 FULL INDICATOR READING.
- (b) INACTIVE FOR DESIGN AFTER 23 NOV 1942.
- (c) INACTIVE FOR DESIGN AFTER 9 MAY 1947 EXCEPT FOR OXIDIZED SYSTEMS AND ENGINE PRIMER LINES.
- (d) DASH NOS. 5, 6, 8, 10 ARE NOT TO BE USED ON ENGINE PRIMER LINES.

5 MATERIAL: BRASS; BARS, SHAPES OR PYROTIOS.
 CORROSION RESISTANT STEEL; BARS, SHAPES OR PYROTIOS.
 NICKEL COPPER ALLOY; BARS, SHAPES OR PYROTIOS.
 SEE PROCUREMENT SPECIFICATION.

FINISH: SEE PROCUREMENT SPECIFICATION.

ADD P BEFORE DASH NO. FOR CADMIUM PLATED BRASS TYPES AND FOR CADMIUM PLATED NICKEL-COPPER ALLOY TYPES.

EXAMPLES OF PART NOS.: AN800-2 - CONE-UNION, BRASS, FOR .125 (2/16) TUBE OD.
 AN800P2 - CONE-UNION, BRASS, CADMIUM PLATED, FOR .125 (2/16) TUBE OD.
 AN800C2 - CONE-UNION, CORROSION RESISTANT STEEL, FOR .125 (2/16) TUBE OD.
 AN800N2 - CONE-UNION, NICKEL-COPPER ALLOY, FOR .125 (2/16) TUBE OD.
 AN800PK2 - CONE-UNION, NICKEL-COPPER ALLOY, CADMIUM PLATED, FOR .125 (2/16) TUBE OD.

5 BREAK ALL SHARP EDGES AND REMOVE ALL HANGING BURRS AND SLIVERS WHICH MIGHT REMOVE RESIDUES UNDER COAT.

5 DIMENSIONS IN INCHES. UNLESS OTHERWISE SPECIFIED, TOLERANCES: DECIMALS ±.030, ANGLES ±1/2°.

PROCUREMENT SPECIFICATION TPL-3-6001	AIR FORCE-NAVY AERONAUTICAL STANDARD CONE - UNION	AN800
---	--	--------------

APPROVED 23 Nov 42 REVISED 1 16 Dec 42 2 26 Aug 44 3 9 May 47 4 3 Oct 47 5 1 Jun 51