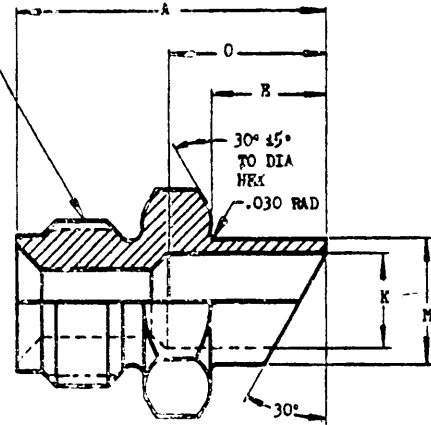
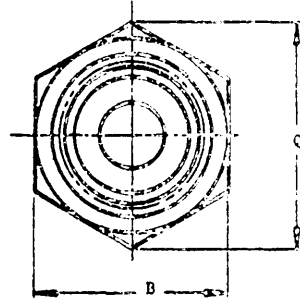


THREAD T FITTING END IN ACCORDANCE WITH AND10089, STYLE E, FOR TUBE SIZE SPECIFIED, UNLESS OTHERWISE SPECIFIED



DASH NO.		TUBING OD	THREAD T	A ±.015	D	E ±.015	K +.005 -.002 DIA	H DIA	O ±.010	Q REF	WEIGHT MAX	
BRASS	CORROSION-RESISTANT STEEL										BRASS	COR RES STEEL
2	C2	.125	.312-32 UNF-3A	.750	.438 ±.003	.312	.125	.219	.375	.51		
3	C3	.188	.375-24 UNF-3A	.938	.438 ±.003	.375	.191	.281	.438	.51		
4	C4	.250	.438-20 UNF-3A	1.000	.500 ±.003	.375	.257	.344	.500	.65		
5	C5	.312	.500-20 UNF-3A	1.188	.625 ±.004	.500	.323	.406	.562	.72		
6	C6	.375	.625-18 UNF-3A	1.250	.750 ±.004	.500	.386	.469	.625	.87		
8	C8	.500	.750-16 UNF-3A	1.625	.875 ±.004	.750	.516	.609	.875	1.01		
10	C10	.625	.938-14 NS-3	1.680	1.000 ±.004	.750	.641	.719	.875	1.09		
12		.750	1.125-12 UNF-3A	2.062	1.250 ±.005	1.000	.766	.849	1.125	1.30		
16		1.000	1.500-12 UNF-3A	2.125	1.750 ±.005	1.000	1.016	1.125	1.388	2.02		

(a) INACTIVE FOR DESIGN AFTER 23 NOVEMBER 1942.

(b) INACTIVE FOR DESIGN AFTER 9 MAY 1947 EXCEPT FOR OXYGEN SYSTEMS AND ENGINE PRIMER LINES.

(c) DASH NUMBERS 5, 6, 8, 10 ARE NOT TO BE USED ON ENGINE PRIMER LINES.

FOR DEFINITION AND APPLICATION OF DRAWING STATUS NOTES, SEE ANA BULLETIN NO. 337.

MATERIAL: BRASS; BARS SHAPES OR FORGINGS.
CORROSION-RESISTANT STEEL; BARS, SHAPES OR FORGINGS.
SEE PROCUREMENT SPECIFICATION.

FINISH: SEE PROCUREMENT SPECIFICATION.

ADD P BEFORE DASH NUMBER FOR CADMIUM PLATED BRASS COUPLING.

EXAMPLES OF PART NUMBERS: AN785-4 = COUPLING-UNION, (BRAZING), BRASS, FOR .250 TUBING OD.
AN785P4 = COUPLING-UNION, (BRAZING), BRASS, CADMIUM PLATED, FOR .250 TUBING OD.
AN785C4 = COUPLING-UNION, (BRAZING), CORROSION-RESISTANT STEEL, FOR .250 TUBING OD.

BREAK ALL SHARP EDGES AND REMOVE ALL HANGING BURRS AND SLIVERS WHICH MIGHT BECOME DISLODGED UNDER USAGE.

DIMENSIONS IN INCHES. UNLESS OTHERWISE SPECIFIED, TOLERANCES: DECIMALS ±.005, ANGLES ±1/2°.

PROCUREMENT
SPECIFICATION

MIL-P-6001

AIR FORCE-NAVY AERONAUTICAL STANDARD

COUPLING, UNION, BRAZING

AN785

APPROVED 23 Nov 42 REVISED 1 8 Jan 43 2 9 May 47 3 28 Feb 49 4 1 Jun 50 5 1 Jun 51 6 14 Aug 56