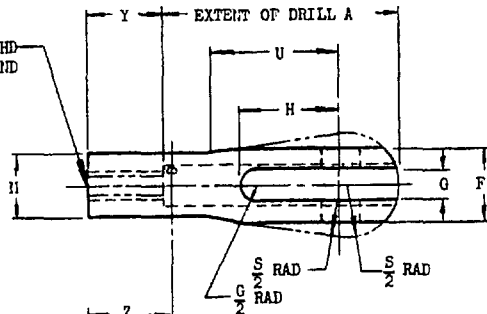


NAVAFTR 10-3A (REV 8-54)

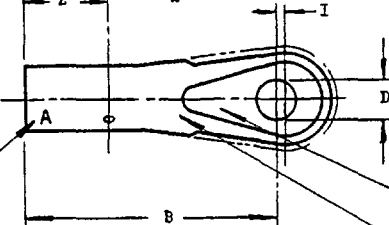
FED. SUP CLASS
5340

CSINK 110° OD OF THE
TAP T 1F-3 RIGHT AND
LEFT HAND
SPEC MIL-S-7742



HOLES AND SLOT TO BE
CENTRAL AND PARALLEL
TO AXIS WITHIN ±.005

MARK A ON -80
SIZE ONLY
POSITION OPTIONAL



AN PART NUMBER INDENTED ON
DASH 34 AND LARGER

MANUFACTURER'S NAME OR TRADEMARK
POSITION OPTIONAL

DASH No.	RATED TIE ROD STGTH. MIN (LB)	TAP T	DRILL A	B ± .015	D DIA +.003 - .000	F +.010 - .005	G +.010 - .000	H	I +.010 - .000	M DIA +.010 - .000	S DIA	U	Y ± .047	Z
10L 10R	1200	6-40	.147	1.313	190 +.002 -.000	.250	.109	.375	.031	.250	.375	.625	.250	.313
21L 21R	2400	10-32	.199	1.531		.313	.150	.469		.281	.500	.719	.313	.375
34L 34R	4200	1/4-28	.261	1.813	.250	.438	.203	.625	.047	.375	.625	.875	.438	.500
46L 46R	(a)4600	5/16-24	.323	1.875	.313	.500		.656		.438	.688	.938	.563	.625
61L 61R	6900			2.000	.563	.844	.453	.750	1.000					
(b)80L 80R	10000	3/8-24	.386	2.250						.375	.266	.875	.063	.547
80LA 80RA					.625									
115L 115R	13700	7/16-20	.453	2.500	.438	.719	.344	1.000	.078	.625	1.063	1.250	.750	.813
155L 155R	18500	1/2-20	.516	2.813	.500	.813	.406	1.188		.703	1.188	1.438	.875	.938
202L 202R	24000	9/16-18	.578	3.125	.563	.922	.453	1.375	.094	.796	1.375	1.625	1.000	1.063
247L 247R	29500	5/8-18	.640	3.375	.625	1.032	.516	1.500		.875	1.500	1.750	1.125	1.188
430L 430R	42000	3/4-16	.766	4.125	.750	1.250	.656	1.938	.109	1.063	1.813	2.250	1.375	1.438
580L 580R	58000	7/8-14	.891	4.875	.875	1.500	.781	2.313		1.250	2.125	2.688	1.625	1.688
760L 760R	76000	1-14	1.016	5.750	1.000	1.750	.906	2.688	.125	1.438	2.438	3.125	1.875	1.938
(c)780L 780R	76000	1-12	1.016	5.750	1.000	1.750	.906	2.688	.125	1.438	2.438	3.125	1.875	1.938

- (a) SPECIAL FOR USE WITH 6900 LB ROD WITH 1600 LB RATING.
- (b) -60L AND -80R SIZES INACTIVE FOR DESIGN AFTER 28 NOV 44.
- (c) -760L AND -760R SIZES INACTIVE FOR DESIGN AFTER 30 Oct 64 USE 780L OR 780R FOR NEW DESIGN.
- (d) FOR DEFINITION AND APPLICATION OF DRAWING STATUS NOTES, SEE MIL-STD-32. MATERIAL: STEEL. ADD L AFTER DASH NUMBER FOR LEFT HAND THREAD. ADD R AFTER DASH NUMBER FOR RIGHT HAND THREAD. EXAMPLE OF PART NO.: A1665-10L = LEFT HAND THREAD. A1665-10R = RIGHT HAND THREAD.

DIMENSIONS IN INCHES. UNLESS OTHERWISE SPECIFIED, TOLERANCES: FRACTIONS ±1/64, DECIMALS ±.010, ANGLES ±1/2°. REMOVE ALL BURRS AND SHARP EDGES.

PROCUREMENT SPECIFICATION

AIR FORCE-NAVY AERONAUTICAL STANDARD

MIL-T-5683

TERMINAL - THREADED GLEVIS TYPE TIE ROD

AN665

NOTICE: This Government drawing, specifications or other data are used for any purpose other than in connection with a definitely related Government procurement operation, the United States Government thereby incurs no responsibility nor any obligation whatsoever, and the fact that the Government may have furnished or may in any way supply the said drawings, specifications, or other data is not to be regarded as an implication or otherwise as in any way favoring the holder or any other person or corporation, or entitling any rights or permissions to manufacture, use, or sell any patented invention that may in any way be related thereto.

NOTE: This drawing was approved by joint action of the Air Force and Navy Departments as the Air Force-Navy standard for this product. This drawing supersedes all antecedent standard drawings for this same product and shall become effective for the procurement of aeronautical supplies or for use in new design not later than 6 months after the latest date of approval above.

APPROVED 4 Sep 42 REVISED 1 28 Nov 44 2 8 Feb 51 3 30 Oct 64 4 25 Mar 65

NOTICE
OF VALIDATION

INCH-POUND

AN665 REV 4
NOTICE 2
28 May 1993

MILITARY STANDARD
TERMINAL - THREADED CLEVIS TIE ROD

AN665 Revision 4, dated 25 March 1965, has been reviewed and determined to be valid for use in acquisition

Custodian
Navy - AS
AF - 99

Preparing Activity
Navy - AS

Review Activity:
Army - MI
DLA - IS

AMSC N/A

DISTRIBUTION STATEMENT A

Approved for public release, distribution is unlimited

5340