

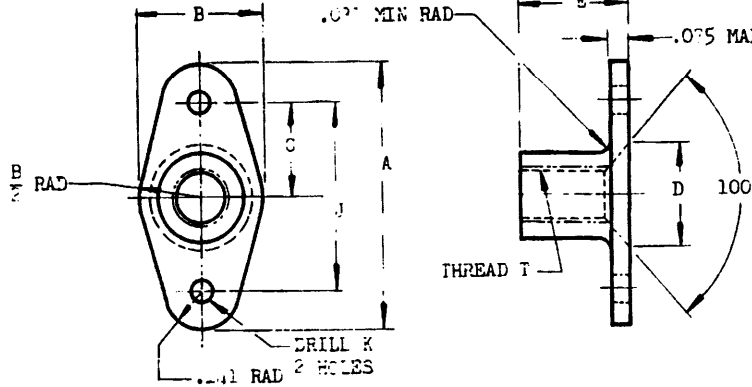
NAVAER 1080C

(PROJ. NO. 5310-0549)

FSC 5310

NOTICE.—When Government drawings, specifications, or other data are used for any purpose other than in connection with a definitely related Government procurement operation, the United States Government thereby incurs no responsibility, nor any obligation whatsoever, and the fact that the Government may have furnished, furnished, or in any way supplied the said drawings, specifications, or other data in any form or by any means, or in any column or edition, or in any way, does not constitute an acknowledgment or approval of the drawings, specifications, or other data, or any right or privilege to manufacture, use, or sell any product in violation of any patent or copyright that may in any way be related thereto.

NOTE.—This drawing was approved by joint action of the Air Force and Navy Department as the Air Force Navy standard and shall become effective for the procurement of aeronautical supplies, or for use in new design, not later than six months after the latest date of approval shown.



SIZE	A	B MAX	(a) NC	D DIA		E MAX	J ±.002	K +.005 -.000 DIA
				MAX	MIN			
NO. 5	.969	.453	.32	.170	.360	.359	.685	.095
NO. 10	.969	.453	.32	.170	.406	.359	.685	.095
1/4	1.281	.656	.500	.277	.521	.457	1.000	.095
5/16	1.281	.656	.500	.277	.611	.521	1.000	.130

④

DASH NUMBERS		THREAD T
DP52	ALUMINUM ALLOY	
DP32	DP52	NO. 5-32 NC-2B
DP10	DP10	NO. 10-32 NF-3B
DP1/4	DP1/4	1/4-28UNF-3B
DP5/16	DP5/16	5/16-24UNF-3B

(a) THE CENTER OF THE TAPPED HOLE SHALL NOT DEVIATE IN ANY DIRECTION FROM THE CENTER OF THE PLATE NUT AS DETERMINED BY THE RIVET HOLES BY MORE THAN .005.

(b) MINIMUM 5 NOT SPECIFIED. LIMITED ONLY BY STRENGTH REQUIREMENT OF SPECIFICATION. ADD A AFTER DASH NO. FOR NUTS HAVING NON-METALLIC INSERTS.

ADD B AFTER DASH NO. FOR NUTS FABRICATED ENTIRELY FROM METAL.

EXAMPLES OF PART NOS: AN373FL25 = 1/4-28 STEEL NUT, EITHER ALL METAL OR WITH NON-METALLIC INSERT.

AN373DFL25 = 1/4-28 ALUMINUM ALLOY NUT, EITHER ALL METAL OR WITH NON-METALLIC INSERT.

AN373FL25A = 1/4-28 STEEL NUT WITH NON-METALLIC INSERT.

AN373DFL25B = 1/4-28 ALUMINUM ALLOY ALL METAL NUT.

DIMENSIONS IN INCHES. UNLESS OTHERWISE SPECIFIED, TOLERANCES: DECIMALS ±.015, ANGLES ±1/2°.

FOR INSTALLATION INSTRUCTIONS SEE MS33598.

③ INACTIVE FOR NEW DESIGN AFTER 7 APRIL 1967. USE MS21049.

③ FOR INTERCHANGEABILITY RELATIONSHIP: SEE MS21049

④ CANCEL STEEL NUTS ONLY

PROCUREMENT SPECIFICATION

AIR FORCE-NAVY AERONAUTICAL STANDARD

AN-N-5

NUT - SELF LOCKING, PLATE, CONTEMPORARY TYPE, 250°F

AN373

APPROVED 11 Apr 49 REVISED 4 Oct 50 ② 17 Feb 59 ③ 7 Apr 67 ④ 21 MAR 72